



A Phoenix Mecano Company



EX EQUIPMENT

Ex d Solutions

www.rose-pw.de



In 1969 ROSE Systemtechnik GmbH was founded in Porta Westfalica, Germany. Today ROSE is one of the world's leading and innovative providers of industrial enclosure system engineering, employing over 350 people worldwide.

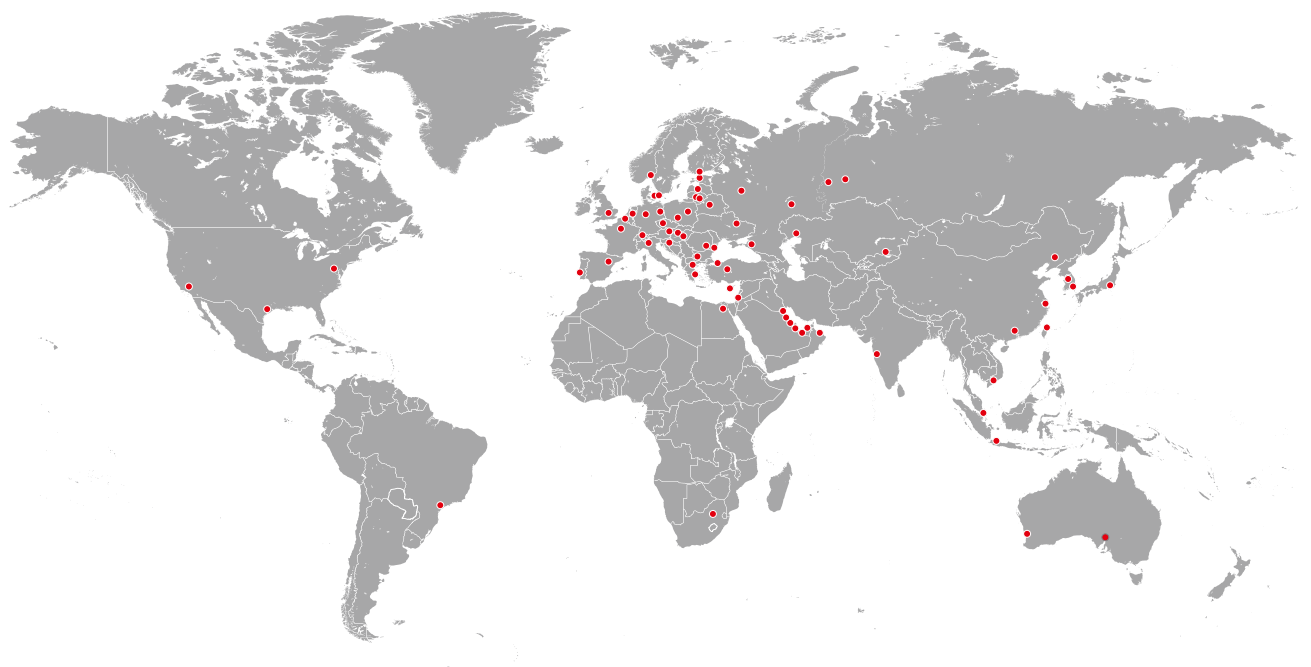
In association with Phoenix Mecano AG, Switzerland, we develop and manufacture high-quality industrial enclosures and system solutions for areas such as mechanical and plant engineering, automation engineering, potentially explosive atmospheres, instrumentation, control and automation technology, as well as the foodstuff and beverage industry.

Our product range comprises the following:





- Standard industrial enclosures made of aluminum, stainless steel and plastics for individual installations of electrical connection technology and electronic components.
- Operating and display enclosures based on aluminum profile systems and stainless steel materials for HMI applications with industrial PCs, PLC control systems and visualization units, including suspension systems.
- Components for explosion protection with junction boxes and control stations for worldwide use in potentially explosive atmospheres, as well as the petrochemical and chemical industry in both onshore and offshore environments.

Our business success is based on a wide range of products, a high quality standard, constant innovation and an exceptional level of service. You decide the condition of delivery – the un-machined enclosure, a partial assembly or a completely assembled and tested customized system solution.

Take advantage of our worldwide sales and marketing network for your international projects.



Contents

	Page
	5
	11
	17
	23



For further Ex-series products see our catalogue „Ex Equipment“ or visit our website.



Applications in Stainless Steel



Maße durch Formkonstante nach DIN EN 60929-1
 Freigabe – toleranz nach Gl. 13/5 DIN EN 60929

Ko. Best.-
 Kompaktgeh.
 Bestell-Nr. BU.



Ø 10
 180/188*
 149/147*
 105,5/105,5*

2-Weitererschreibe
 M8 x 20/7 Øhohl. DIN 914



120/118*
 109/107*
 68,5/63,5*

Ø 10
 120/118*
 109/107*
 68,5/63,5*

Kompaktgehäuse ECO 03-8
 Bestell-Nr. 60.090921
 Kompaktgehäuse ECO 03-8-1
 Bestell-Nr. 60.090922



KAT 04.121.208



Ex d IIB+H₂ Enclosure Series EJB



- + Flameproof aluminium or stainless steel enclosure system suitable for assembly of terminals, switches and components
- + Window optional
- + External flameproof joint
- + For gas group IIB + H₂

Included in delivery

Enclosure system consisting of base and screwed lid, external earth connection, hinge and external brackets

Technical data

Explosion protection	II 2 G Ex db IIB + H ₂ T6/T5 Gb II 2 D Ex tb IIIC T80 °C... T95 °C Db
Material	Copper free aluminium Stainless steel 1.4404/316L
Colour	Aluminium: RAL 7035, light grey Stainless steel: unpainted, painting on request
Ingress protection	IP66 to EN 60529
Impact resistance	7 Joule to EN 60079-0
Temperature range	-20 °C to +75 °C
Certificates	ITS 15 ATEX 18302X IECEX ITS 15.0041X



Ex d IIB+H₂ Enclosure Series EJB

Product overview

Order No.	Type	External dimensions H x W x D (mm)	Internal dimensions H x W x D (mm)	Max. rated current (A)	Max. conductor size (mm ²)	Weight (g)
Aluminium						
40.10 30 10	EJB 01 AL	220 x 170 x 152	150 x 100 x 119	76	16	4300
40.10 30 20	EJB 02 AL	270 x 220 x 158	200 x 150 x 125	125	35	6600
40.10 30 30	EJB 03 AL	320 x 270 x 166	250 x 200 x 129	232	95	10100
40.10 30 60	EJB 06 AL	490 x 440 x 250	400 x 350 x 195	415	240	30200
40.10 30 90	EJB 09 AL	780 x 580 x 440	650 x 450 x 361	935	630	115000
40.10 31 00	EJB 10 AL	980 x 680 x 487	850 x 550 x 387	1055	1000	202000
Stainless Steel						
40.20 30 10	EJB 01 SS	220 x 170 x 152	150 x 100 x 119	76	16	12600
40.20 30 20	EJB 02 SS	270 x 220 x 158	200 x 150 x 125	125	35	19600
40.20 30 30	EJB 03 SS	320 x 270 x 166	250 x 200 x 129	232	95	30300

Accessories

Order No.	Mounting plate	Dimensions H x W x D (mm)
40.10 30 10	40.30 30 10	142 x 92 x 1.5
40.10 30 20	40.30 30 20	192 x 142 x 1.5
40.10 30 30	40.30 30 30	242 x 192 x 1.5
40.10 30 60	40.30 30 60	375 x 325 x 1.5
40.10 30 90	40.30 30 90	590 x 390 x 1.5
40.10 31 00	40.30 31 00	780 x 480 x 1.5
40.20 30 10	40.30 30 10	142 x 92 x 1.5
40.20 30 20	40.30 30 20	192 x 142 x 1.5
40.20 30 30	40.30 30 30	242 x 192 x 1.5

Terminal mounting

DIN rail	Phoenix Contact													
	TS 35	TS 35	TS 35	TS 35	TS 35	TS 35	TS 35	TS 35	TS 35	TS 35	TS 35	TS 35	TS 35	TS 35
Rated nominal cross section (mm ²)	2,5	4	6	10	16	25	35	50	70	95	120	150	185	240
Rated voltage (V)	690	690	690	690	690	690	690	690	880	880	1100	1100	1100	1100
Terminal width (mm)	5.2	6.2	8.2	10.2	12.2	16.2	16.2	20	25	25	31	31	36	36
Terminal type														
Enclosure type	UT 2,5	UT 4	UT 6	UT 10	UT 16	UT 35	UT 35	UKH 50	UKH 95	UKH 95	UKH 150	UKH 150	UKH 240	UKH 240
40.10 30 10	20	16	8	6	4									
40.10 30 20	30	24	12	10	8	6	6							
40.10 30 30	40	32	16	12	10	8	8	6	4	4				
40.10 30 60	100	82	64	50	42	32	32	15	12	12	9	9	8	8
40.10 30 90	240	204	160	124	104	76	76	30	24	24	20	20	16	16
40.10 30 00	390	325	250	200	165	125	125	60	48	48	24	24	22	22
40.20 30 10	20	16	8	6	4									
40.20 30 20	30	24	12	10	8	6	6							
40.20 30 30	40	32	16	12	10	8	8	6	4	4				

Other suppliers on request



Ex d IIB+H₂ Enclosure Series EJB

Technical details

Power dissipation in Watt

Type	Temperature class	T6			T5					T4		
		T80 °C			T95 °C					T130 °C		
	Maximum surface temperature											
	Maximum ambient temperature	+40 °C	+50 °C	+60 °C	+40 °C	+50 °C	+55 °C	+60 °C	+75 °C	+40 °C	+50 °C	+60 °C
EJB 01 AL	Maximum allowed power loss	60 W		36 W			60 W		36 W			
EJB 02 AL		76 W		42 W			76 W		42 W			
EJB 03 AL		87 W		60 W			87 W		60 W			
EJB 06 AL		209 W	166 W	114 W	338 W	260 W		206 W		584 W	514 W	436 W
EJB 09 AL		467 W	319 W	236 W	728 W	555 W		353 W		1238 W	1145 W	956 W
EJB 10 AL		726 W	568 W	400 W	1085 W	864 W		712 W		2038 W	1709 W	1454 W
EJB 01 SS		60 W		36 W			60 W		36 W			
EJB 02 SS		76 W		42 W			76 W		42 W			
EJB 03 SS		87 W		60 W			87 W		60 W			

Assembly possibilities on lid

Type	Control equipment	Window (mm)								
		44 x 44	68 x 68	92 x 92	140 x 140	186 x 186	234 x 234	280 x 280	328 x 376	376 x 376
EJB 01 AL	4	1								
EJB 02 AL	9	4	1	1						
EJB 03 AL	16	9	4	1	1					
EJB 06 AL	49	25	9	4	1	1	1			
EJB 09 AL	88	56	20	12	4	2	1	1	1	
EJB 10 AL	150	90	36	20	9	4	2	1	1	1
EJB 01 SS	4	1								
EJB 02 SS	9	4	1	1						
EJB 03 SS	16	9	4	1	1					

Maximum number of cable glands

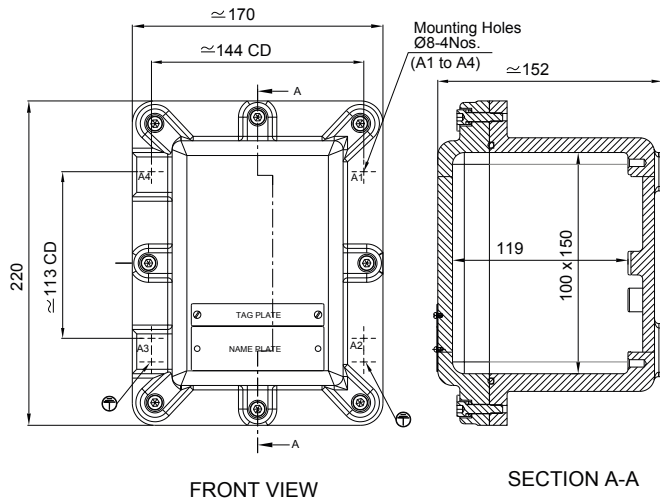
M	NPT	Side	Type								
			EJB 01 AL	EJB 02 AL	EJB 03 AL	EJB 06 AL	EJB 09 AL	EJB 10 AL	EJB 01 SS	EJB 02 SS	EJB 03 SS
20	1/2"	A/B	4	6	8	21	54	66	4	6	8
20	1/2"	C/D	6	8	10	24	84	108	6	8	10
25	3/4"	A/B	2	4	6	17	33	54	2	4	6
25	3/4"	C/D	4	5	8	20	54	90	4	5	8
32	1"	A/B	1	3	4	11	28	36	1	3	4
32	1"	C/D	2	4	5	12	43	60	2	4	5
40	1 1/4"	A/B		2	3	8	18	28		2	3
40	1 1/4"	C/D		3	3	10	28	44		3	3
50	1 1/2"	A/B			2	4	12	18			2
50	1 1/2"	C/D			3	5	21	28			3
63	2"	A/B				3	11	15			
63	2"	C/D				4	17	24			
75	2 1/2"	A/B				3	6	9			
75	2 1/2"	C/D				3	9	15			
90	3"	A/B					5	7			
90	3"	C/D					8	12			
100	4"	A/B					5	6			
100	4"	C/D					7	10			



Ex d IIB+H₂ Enclosure Series EJB

Technical details

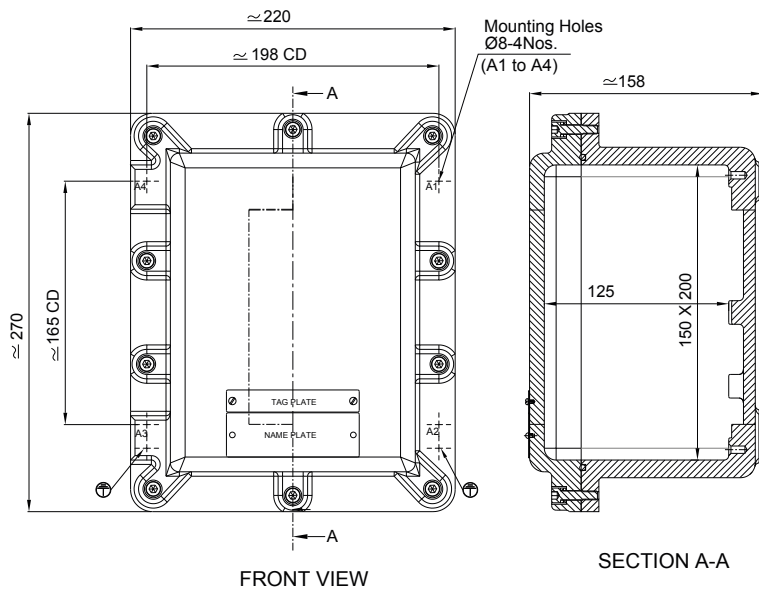
EJB 01 AL / EJB 01 SS



Maximum number of cable glands

M	Side		NPT	Side	
	A/B	C/D		A/B	C/D
12			1/2	4	6
16			3/4	2	4
20	4	6	1	1	2
25	2	4	1 1/4		
32	1	2	1 1/2		
40			2		
50			2 1/2		
63			3		
75					
85					

EJB 02 AL / EJB 02 SS



Maximum number of cable glands

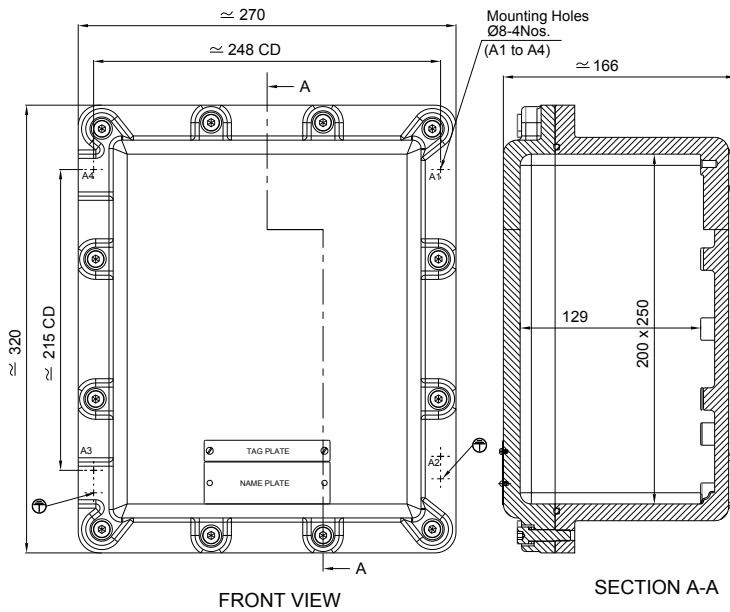
M	Side		NPT	Side	
	A/B	C/D		A/B	C/D
12			1/2	6	8
16			3/4	4	5
20	6	8	1	3	4
25	4	5	1 1/4	2	3
32	3	4	1 1/2		
40	2	3	2		
50			2 1/2		
63			3		
75					
85					



Ex d IIB+H₂ Enclosure Series EJB

Technical details

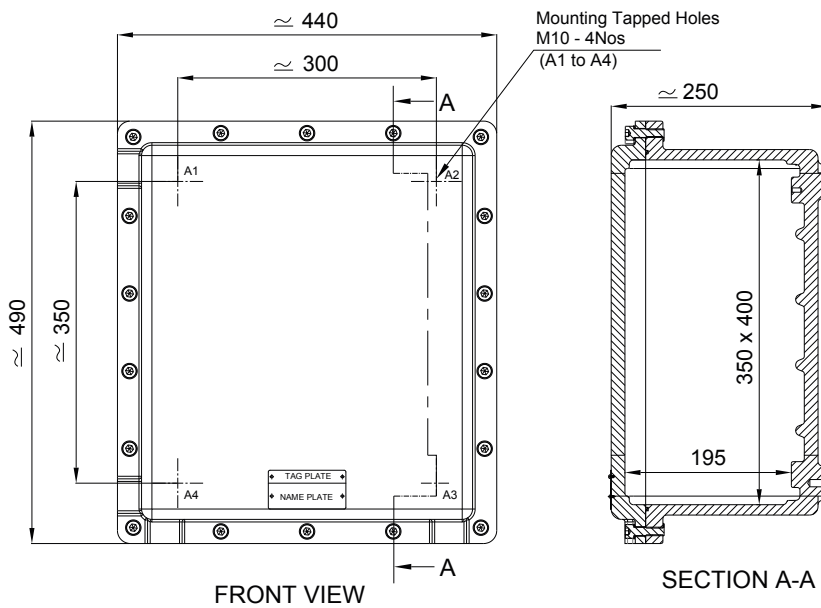
EJB 03 AL / EJB 03 SS



Maximum number of cable glands

M	Side		NPT	Side	
	A/B	C/D		A/B	C/D
12			1/2	8	10
16			3/4	6	8
20	8	10	1	4	5
25	6	8	1 1/4	3	3
32	4	5	1 1/2	2	3
40	3	3	2		
50	2	3	2 1/2		
63			3		
75					
85					

EJB 06 AL



Maximum number of cable glands

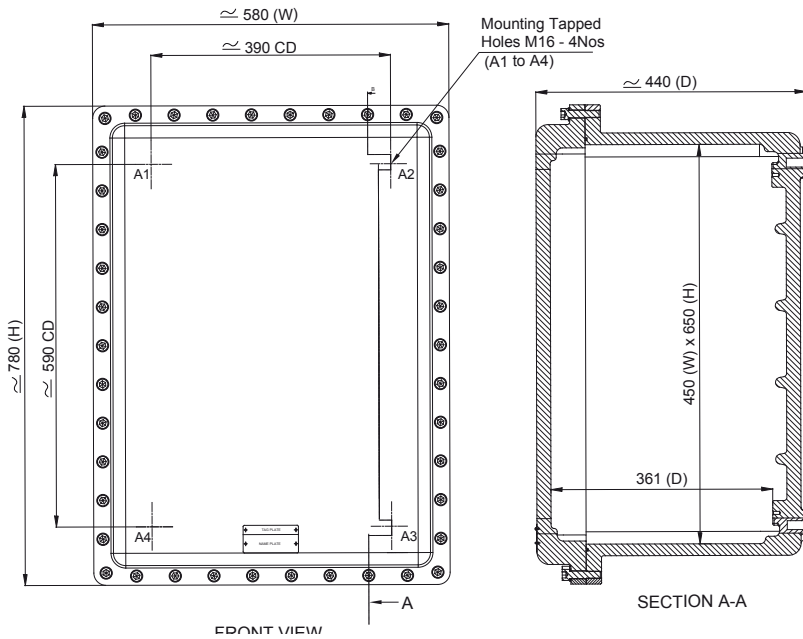
M	Side		NPT	Side	
	A/B	C/D		A/B	C/D
12			1/2	21	24
16			3/4	17	20
20	21	24	1	11	12
25	17	20	1 1/4	8	10
32	11	12	1 1/2	4	5
40	8	10	2	3	4
50	4	5	2 1/2	3	3
63	3	4	3		
75	3	3			
85					



Ex d IIB+H₂ Enclosure Series EJB

Technical details

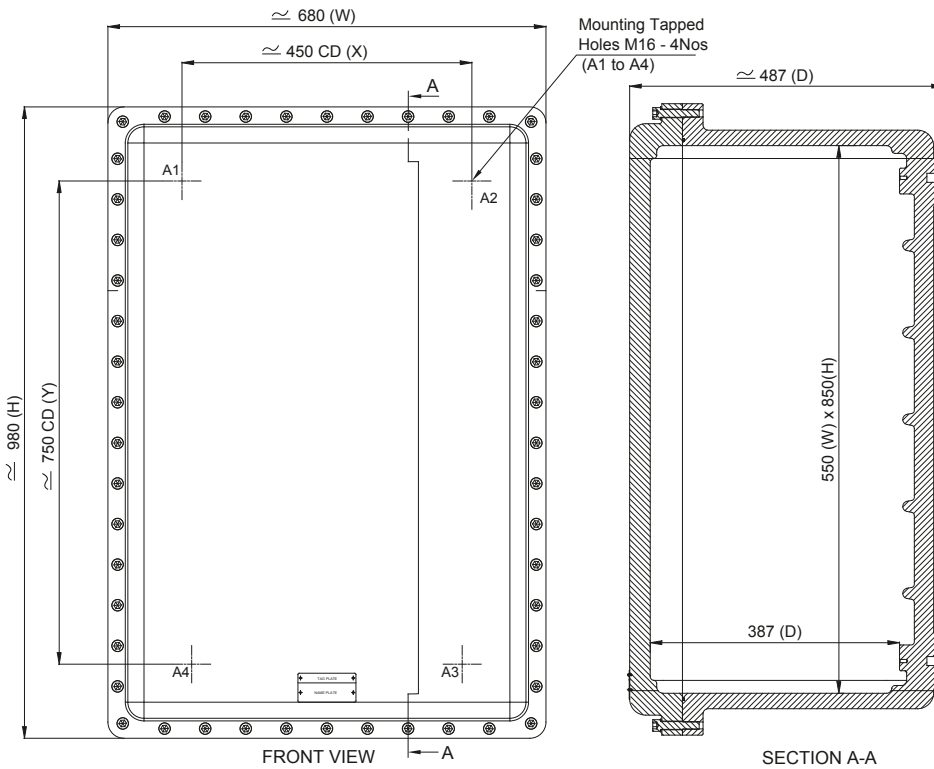
EJB 09 AL



Maximum number of cable glands

M	Side		NPT	Side	
	A/B	C/D		A/B	C/D
12			1/2	54	84
16			3/4	33	54
20	54	84	1	28	43
25	33	54	1 1/4	18	28
32	28	43	1 1/2	12	21
40	18	28	2	11	17
50	12	21	2 1/2	6	9
63	11	17	3	5	8
75	6	9	4	5	7
85	5	8			
100	5	7			

EJB 10 AL



Maximum number of cable glands

M	Side		NPT	Side	
	A/B	C/D		A/B	C/D
12			1/2	66	108
16			3/4	54	90
20	66	108	1	36	60
25	54	90	1 1/4	28	44
32	36	60	1 1/2	18	28
40	28	44	2	15	24
50	18	28	2 1/2	9	15
63	15	24	3	7	12
75	9	15	4	6	10
85	7	12			
100	6	10			



Ex d IIB+H₂ Enclosure Series IJB



- + Flameproof aluminium enclosure system suitable for assembly of terminals, switches and components
- + Combination of several enclosures possible due to internal flameproof joint
- + Window optional
- + For gas group IIB + H₂

Included in delivery

Enclosure system consisting of base and lid with screws, external earth connection, hinge and external brackets

Technical data

Explosion protection	II 2 G Ex db IIB + H ₂ T6/T5/T4 Gb II 2 D Ex tb IIIC T80 °C...T130 °C Db
Material	Copper free aluminium
Ingress protection	IP66 to EN 60529
Impact resistance	7 Joule to EN 60079-0
Temperature range	-20 °C to +75 °C
Certificates	ITS 15 ATEX 18301X IECEX ITS 15.0043X



Ex d IIB+H₂ Enclosure Series IJB

Product overview

Order No.	Type	External dimensions H x W x D (mm)	Internal dimensions H x W x D (mm)	Weight (g)
40.10 40 10	IJB 01 AL	320 x 220 x 223	296 x 196 x 185	12100
40.10 40 20	IJB 02 AL	370 x 270 x 225	346 x 246 x 185	15700
40.10 40 30	IJB 03 AL	420 x 320 x 247	392 x 292 x 203	22900
40.10 40 40	IJB 04 AL	470 x 370 x 249	442 x 342 x 200	29700
40.10 40 50	IJB 05 AL	530 x 430 x 283	498 x 398 x 222	47000
40.10 40 60	IJB 06 AL	630 x 530 x 288	594 x 494 x 221	70100

Accessories

Order No.	Mounting plate	Dimensions H x W x D (mm)
40.10 40 10	40.30 40 10	245 x 145 x 1,5
40.10 40 20	40.30 40 20	295 x 195 x 1,5
40.10 40 30	40.30 40 30	345 x 245 x 1,5
40.10 40 40	40.30 40 40	395 x 295 x 1,5
40.10 40 50	40.30 40 50	445 x 345 x 1,5
40.10 40 60	40.30 40 60	545 x 445 x 1,5

Terminal mounting

DIN rail	Phoenix Contact													
	TS 35	TS 35	TS 35	TS 35	TS 35	TS 35	TS 35	TS 35	TS 35	TS 35	TS 35	TS 35	TS 35	TS 35
Rated nominal cross section (mm ²)	2,5	4	6	10	16	25	35	50	70	95	120	150	185	240
Rated voltage (V)	690	690	690	690	690	690	690	690	880	880	1100	1100	1100	1100
Terminal width (mm)	5.2	6.2	8.2	10.2	12.2	16.2	16.2	20	25	25	31	31	36	36
Terminal type														
Enclosure type	UT 2,5	UT 4	UT 6	UT 10	UT 16	UT 35	UT 35	UKH 50	UKH 95	UKH 95	UKH 150	UKH 150	UKH 240	UKH 240
40.10 40 10	40	32	20	16	12	8	8							
40.10 40 20	60	50	27	21	18	12	12	8	4	4				
40.10 40 30	80	66	34	26	21	15	15	10	6	6	4	4		
40.10 40 40	100	82	34	32	25	18	18	12	10	10	8	8	4	4
40.10 40 50	120	82	46	32	30	18	18	15	12	12	9	9	6	6
40.10 40 60	160	132	60	46	38	28	28	20	16	16	12	12	9	9

Other suppliers on request



Ex d IIB+H₂ Enclosure Series IJB

Technical details

Power dissipation in Watt

Type	Temperature class	T6			T5					T4		
		T80 °C			T95 °C					T130 °C		
	Maximum surface temperature	+40 °C	+50 °C	+60 °C	+40 °C	+50 °C	+55 °C	+60 °C	+75 °C	+40 °C	+50 °C	+60 °C
IJB 01 AL	Maximum allowed power loss	108 W		56 W			108 W		56 W			
IJB 02 AL		120 W		72 W			120 W		72 W			
IJB 03 AL		145 W		76 W			145 W		76 W			
IJB 04 AL		198 W	150 W	95 W	280 W	220 W		160 W		480 W	430 W	360 W
IJB 05 AL		300 W	200 W	136 W	408 W	309 W		241 W		659 W	586 W	491 W
IJB 06 AL		332 W	218 W	155 W	473 W	400 W		282 W		894 W	818 W	636 W

Assembly possibilities on lid

Type	Control equipment	Window (mm)									
		44 x 44	68 x 68	92 x 92	92 x 140	140 x 140	140 x 186	186 x 186	234 x 234	280 x 280	376 x 376
IJB 01 AL	12	6	2	1	1						
IJB 02 AL	20	12	4	2	1	1	1				
IJB 03 AL	30	16	4	4	2	1	1	1			
IJB 04 AL	42	25	9	4	2	1	1	1	1		
IJB 05 AL	56	36	16	9	6	4	2	1	1	1	
IJB 06 AL	90	64	25	16	8	4	4	4	1	1	1

Maximum number of cable glands

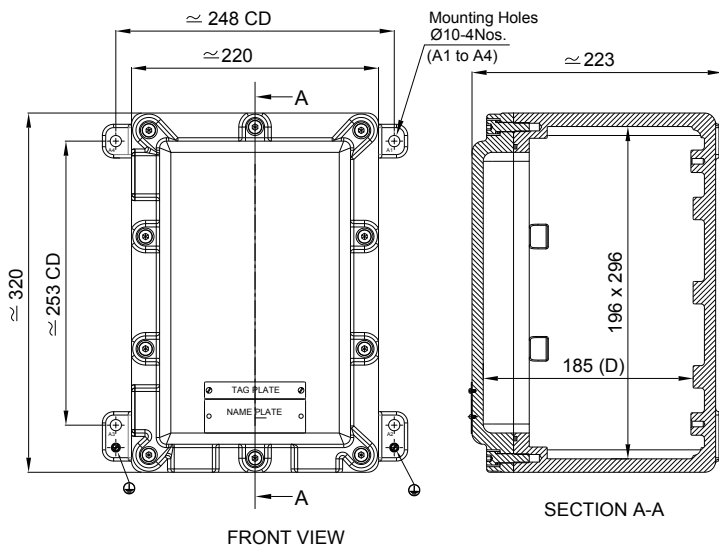
M	NPT	Side	Type					
			IJB 01 AL	IJB 02 AL	IJB 03 AL	IJB 04 AL	IJB 05 AL	IJB 06 AL
20	1/2"	A/B	11	14	18	22	32	40
20	1/2"	C/D	17	20	24	28	40	48
25	3/4"	A/B	6	9	14	17	20	26
25	3/4"	C/D	11	14	20	23	26	30
32	1"	A/B	5	6	9	11	17	23
32	1"	C/D	8	9	14	15	23	26
40	1 1/4"	A/B	3	5	6	8	11	14
40	1 1/4"	C/D	6	8	9	11	14	17
50	1 1/2"	A/B	2	3	4	5	8	9
50	1 1/2"	C/D	3	4	6	7	9	11
63	2"	A/B			3	4	5	7
63	2"	C/D			4	5	7	8
75	2 1/2"	A/B					3	4
75	2 1/2"	C/D					4	5



Ex d IIB+H₂ Enclosure Series IJB

Technical details

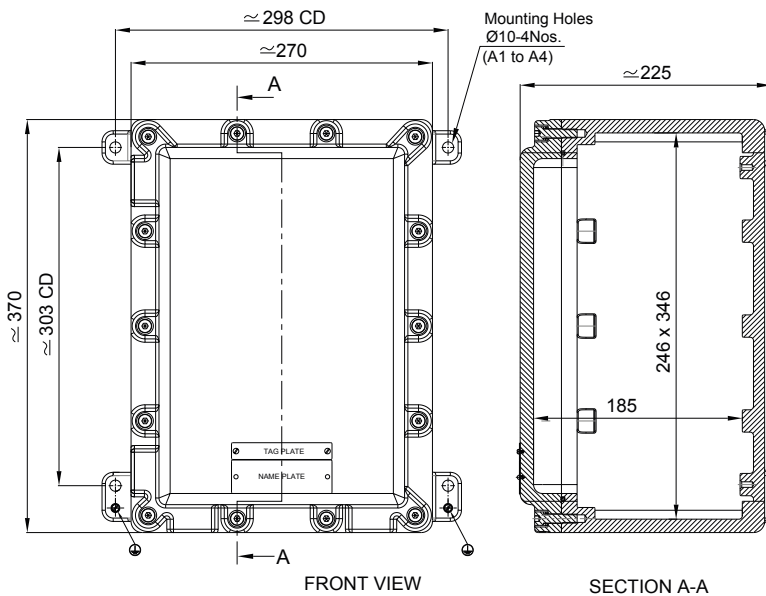
IJB 01 AL



Maximum number of cable glands

M	Side		NPT	Side	
	A/B	C/D		A/B	C/D
12			1/2	11	17
16			3/4	6	11
20	11	17	1	5	8
25	6	11	1 1/4	3	6
32	5	8	1 1/2	2	3
40	3	6	2		
50	2	3	2 1/2		
63			3		
75					
85					

IJB 02 AL



Maximum number of cable glands

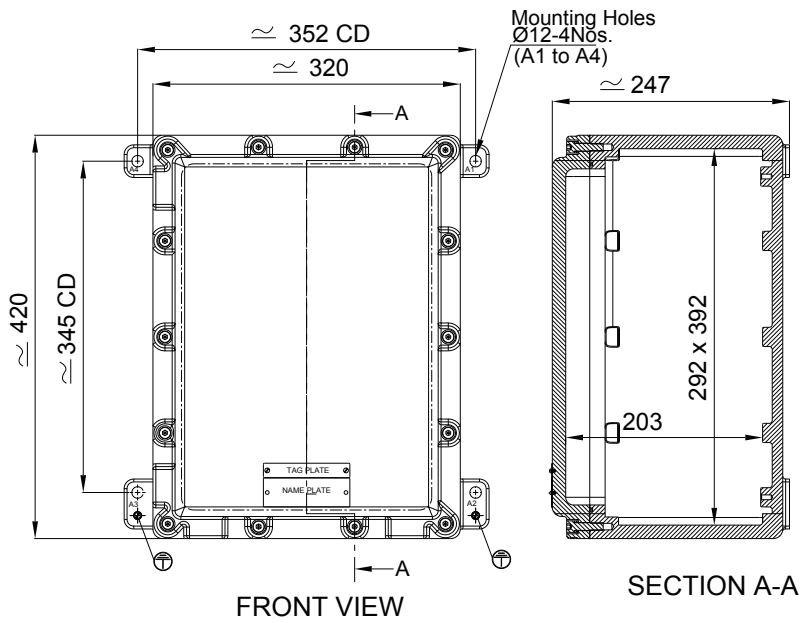
M	Side		NPT	Side	
	A/B	C/D		A/B	C/D
12			1/2	14	20
16			3/4	9	14
20	14	20	1	6	9
25	9	14	1 1/4	5	8
32	6	9	1 1/2	3	4
40	5	8	2		
50	3	4	2 1/2		
63			3		
75					
85					



Ex d IIB+H₂ Enclosure Series IJB

Technical details

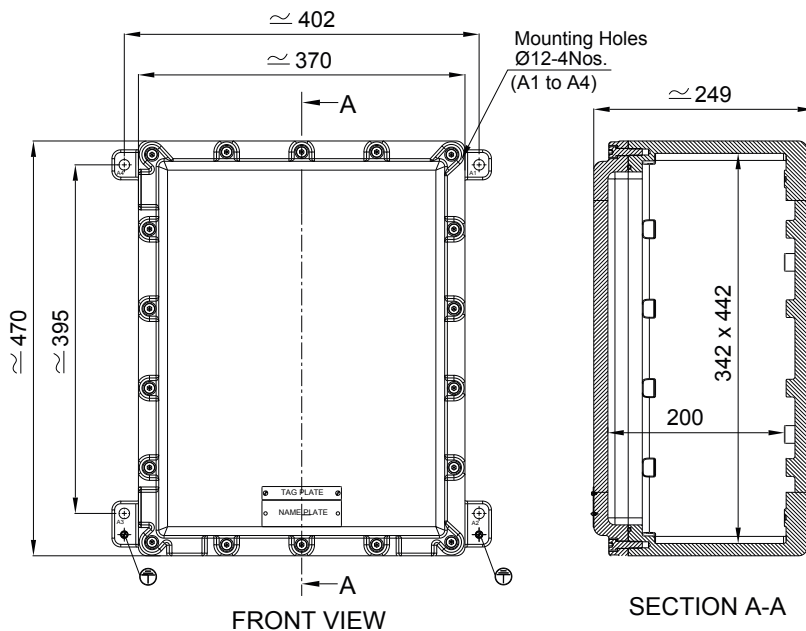
IJB 03 AL



Maximum number of cable glands

M	Side		NPT	Side	
	A/B	C/D		A/B	C/D
12			1/2	18	24
16			3/4	14	20
20	18	24	1	9	14
25	14	20	1 1/4	6	9
32	9	14	1 1/2	4	6
40	6	9	2	3	4
50	4	6	2 1/2		
63	3	4	3		
75					
85					

IJB 04 AL



Maximum number of cable glands

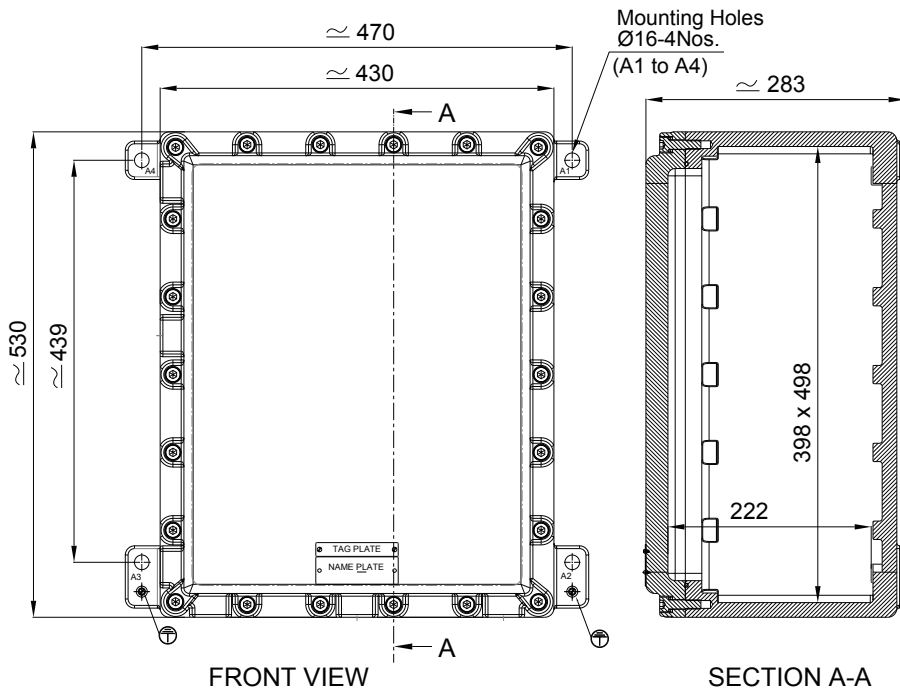
M	Side		NPT	Side	
	A/B	C/D		A/B	C/D
12			1/2	22	28
16			3/4	17	23
20	22	28	1	11	15
25	17	23	1 1/4	8	11
32	11	15	1 1/2	5	7
40	8	11	2	4	5
50	5	7	2 1/2		
63	4	5	3		
75					
85					



Ex d IIB+H₂ Enclosure Series IJB

Technical details

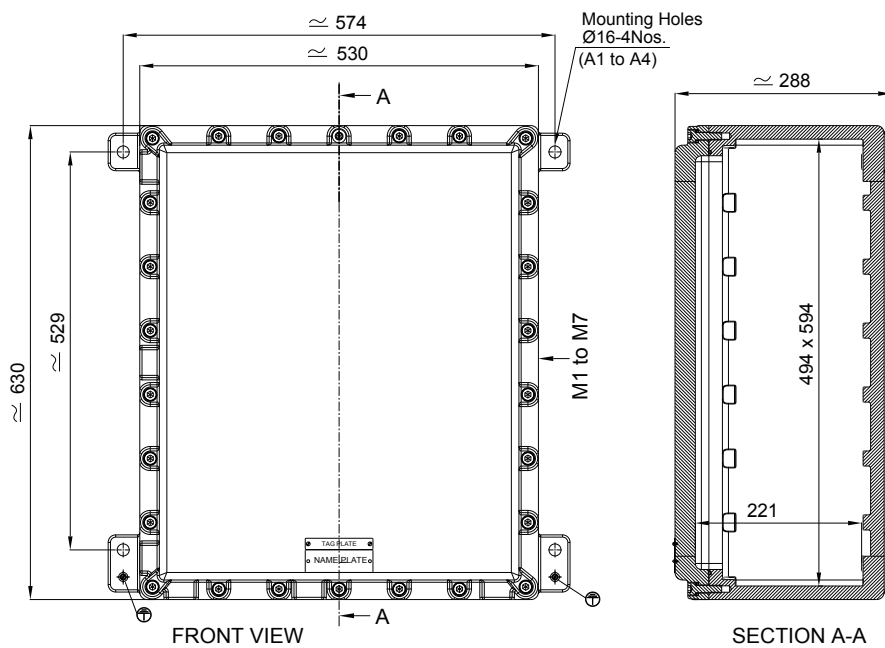
IJB 05 AL



Maximum number of cable glands

M	Side		NPT	Side	
	A/B	C/D		A/B	C/D
12			1/2	32	40
16			3/4	20	26
20	32	40	1	17	23
25	20	26	1 1/4	11	14
32	17	23	1 1/2	8	9
40	11	14	2	5	7
50	8	9	2 1/2	3	4
63	5	7	3		
75	3	4			
85					

IJB 06 AL



Maximum number of cable glands

M	Side		NPT	Side	
	A/B	C/D		A/B	C/D
12			1/2	40	48
16			3/4	26	30
20	40	48	1	23	26
25	26	30	1 1/4	14	17
32	23	26	1 1/2	9	11
40	14	17	2	7	8
50	9	11	2 1/2	4	5
63	7	8	3		
75	4	5			
85					



Ex d IIC Enclosure Series GUB



- + Flameproof enclosure system suitable for assembly of terminals, switches and components
- + For gas group IIC

Included in delivery

Enclosure system consisting of base and lid with screws, external earth connection and external brackets

Technical data

Explosion protection	II 2 G Ex db IIC T6/T5/T4 Gb II 2 D Ex tb IIIC T80 °C...T130 °C Db
Material	Copper free aluminium
Colour	RAL 7035, light grey
Ingress protection	IP66 to EN 60529
Impact resistance	7 Joule to EN 60079-0
Temperature range	-20 °C to +75 °C
Certificates	ITS 15 ATEX 18212X IECEx ITS 15.0011X



Ex d IIC Enclosure Series GUB

Product overview

Order No.	Type	External dimensions H x W x D (mm)	Internal dimensions H x W x D (mm)	Weight (g)
40.10 20 10	GUB 01 AL	220 x 220 x 182	196 x 196 x 133	6200
40.10 20 20	GUB 02 AL	270 x 270 x 182	246 x 246 x 128	8800
40.10 20 30	GUB 03 AL	320 x 320 x 211	292 x 292 x 150	15500
40.10 20 40	GUB 04 AL	370 x 370 x 217	342 x 342 x 151	21000
40.10 20 50	GUB 05 AL	420 x 420 x 239	388 x 388 x 170	30000
40.10 20 60	GUB 06 AL	470 x 470 x 247	434 x 434 x 173	39300

Accessories

Order No.	Mounting plate	Dimensions H x W x T (mm)
40.10 20 10	40.30 20 10	170 x 170 x 1,5
40.10 20 20	40.30 20 20	205 x 205 x 1,5
40.10 20 30	40.30 20 30	245 x 245 x 1,5
40.10 20 40	40.30 20 40	290 x 290 x 1,5
40.10 20 50	40.30 20 50	330 x 330 x 1,5
40.10 20 60	40.30 20 60	380 x 380 x 1,5

Terminal mounting

DIN rail	Phoenix Contact													
	TS 35	TS 35	TS 35	TS 35	TS 35	TS 35	TS 35	TS 35	TS 35	TS 35	TS 35	TS 35	TS 35	TS 35
Rated nominal cross section (mm ²)	2,5	4	6	10	16	25	35	50	70	95	120	150	185	240
Rated voltage (V)	690	690	690	690	690	690	690	690	880	880	1100	1100	1100	1100
Terminal width (mm)	5.2	6.2	8.2	10.2	12.2	16.2	16.2	20	25	25	31	31	36	36
Terminal type														
Enclosure type	UT 2,5	UT 4	UT 6	UT 10	UT 16	UT 35	UT 35	UKH 50	UKH 95	UKH 95	UKH 150	UKH 150	UKH 240	UKH 240
40.10 20 10	26	20	10	8	6	4	4							
40.10 20 20	36	26	15	12	10	8	8	6						
40.10 20 30	50	40	20	16	12	10	10	8	6	6				
40.10 20 40	64	54	28	22	18	14	14	10	8	8	6	6		
40.10 20 50	76	60	32	26	20	16	16	12	10	10	8	8		
40.10 20 60	100	80	40	30	26	18	18	14	12	12	10	10	8	8

Other suppliers on request



Ex d IIC Enclosure Series GUB

Technical details

Power dissipation in Watt

Type	Temperature class	T6			T5					T4		
		T80 °C			T95 °C					T130 °C		
	Maximum surface temperature											
	Maximum ambient temperature	+40 °C	+50 °C	+60 °C	+40 °C	+50 °C	+55 °C	+60 °C	+75 °C	+40 °C	+50 °C	+60 °C
GUB 01 AL	Maximum allowed power loss	82 W		38 W			82 W		38 W			
GUB 02 AL		86 W		45 W			86 W		45 W			
GUB 03 AL		114 W		64 W			114 W		64 W			
GUB 04 AL		170 W	120 W	70 W	230 W	180 W		126 W		410 W	376 W	316 W
GUB 05 AL		218 W	168 W	91 W	291 W	226 W		159 W		491 W	451 W	400 W
GUB 06 AL		250 W	182 W	150 W	405 W	282 W		215 W		723 W	609 W	472 W

Maximum number of cable glands

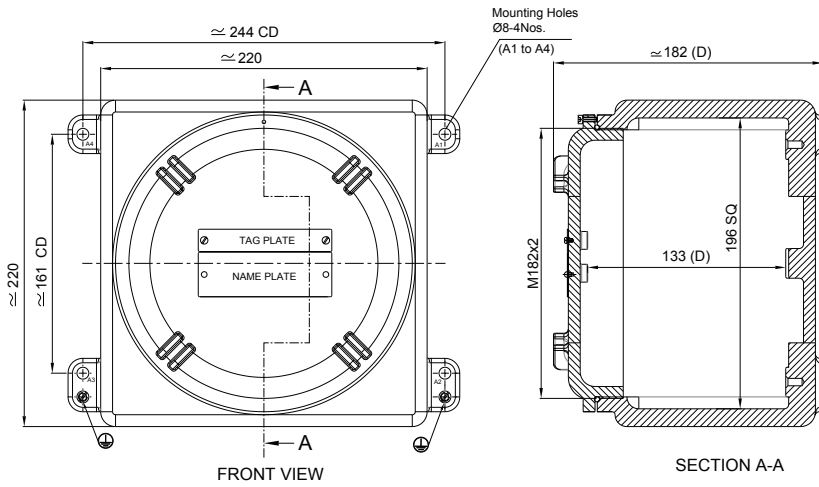
M	NPT	Side	Type					
			GUB 01 AL	GUB 02 AL	GUB 03 AL	GUB 04 AL	GUB 05 AL	GUB 06 AL
20	1/2"	A/B	9	12	18	21	24	27
20	1/2"	C/D	9	12	18	21	24	27
25	3/4"	A/B	6	8	12	14	20	23
25	3/4"	C/D	6	8	12	14	20	23
32	1"	A/B	5	6	8	9	12	14
32	1"	C/D	5	6	8	9	12	14
40	1 1/4"	A/B	3	4	6	8	9	11
40	1 1/4"	C/D	3	4	6	8	9	11
50	1 1/2"	A/B			3	4	6	6
50	1 1/2"	C/D			3	4	6	6
63	2"	A/B				3	4	5
63	2"	C/D				3	4	5
75	2 1/2"	A/B						3
75	2 1/2"	C/D						3



Ex d IIC Enclosure Series GUB

Technical details

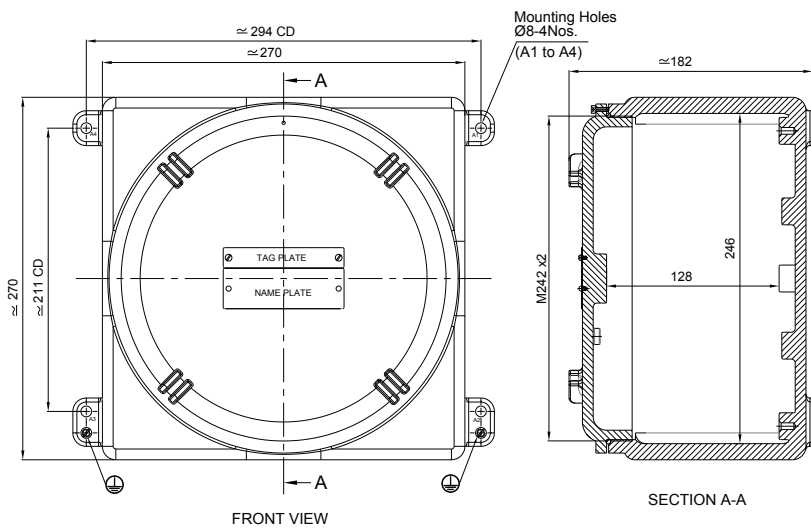
GUB 01 AL



Maximum number of cable glands

M	Side		NPT	v	
	A/B	C/D		A/B	C/D
12			1/2	9	9
16			3/4	6	6
20	9	9	1	5	5
25	6	6	1 1/4	3	3
32	5	5	1 1/2		
40	3	3	2		
50			2 1/2		
63			3		
75					
85					

GUB 02 AL



Maximum number of cable glands

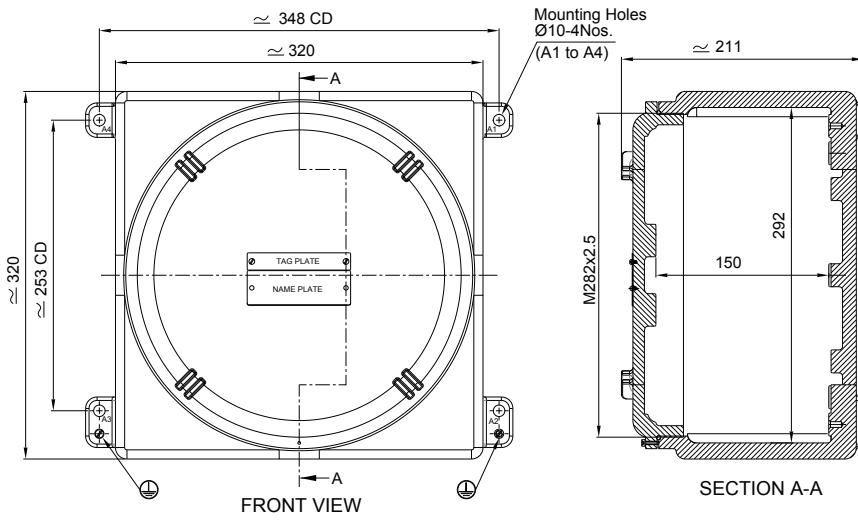
M	Side		NPT	Side	
	A/B	C/D		A/B	C/D
12			1/2	12	12
16			3/4	8	8
20	12	12	1	6	6
25	8	8	1 1/4	4	4
32	6	6	1 1/2		
40	4	4	2		
50			2 1/2		
63			3		
75					
85					



Ex d IIC Enclosure Series GUB

Technical details

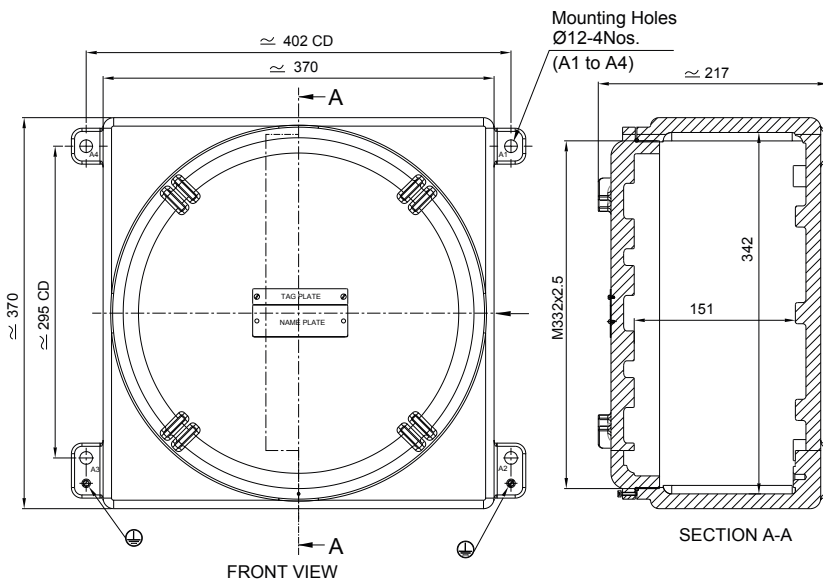
GUB 03 AL



Maximum number of cable glands

M	Side		NPT	Side	
	A/B	C/D		A/B	C/D
12			1/2	18	18
16			3/4	12	12
20	18	18	1	8	8
25	12	12	1 1/4	6	6
32	8	8	1 1/2	3	3
40	6	6	2		
50	3	3	2 1/2		
63			3		
75					
85					

GUB 04 AL



Maximum number of cable glands

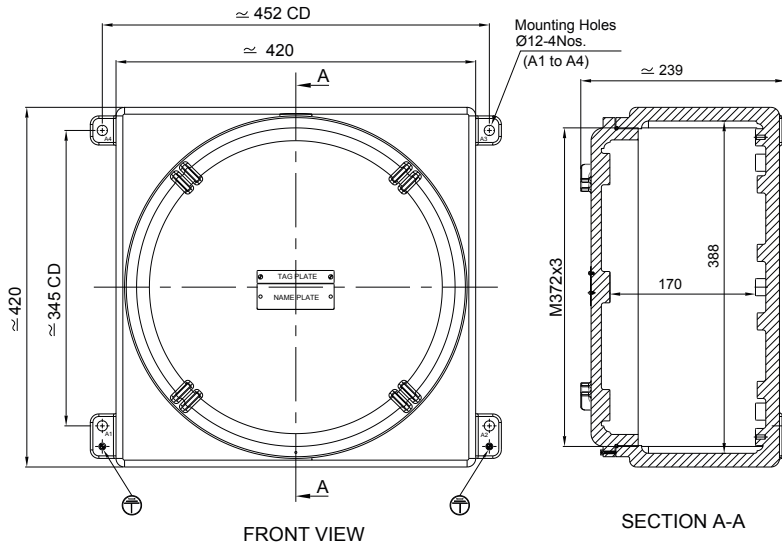
M	Side		NPT	Side	
	A/B	C/D		A/B	C/D
12			1/2	21	21
16			3/4	14	14
20	21	21	1	9	9
25	14	14	1 1/4	8	8
32	9	9	1 1/2	4	4
40	8	8	2	3	3
50	4	4	2 1/2		
63	3	3	3		
75					
85					



Ex d IIC Enclosure Series GUB

Technical details

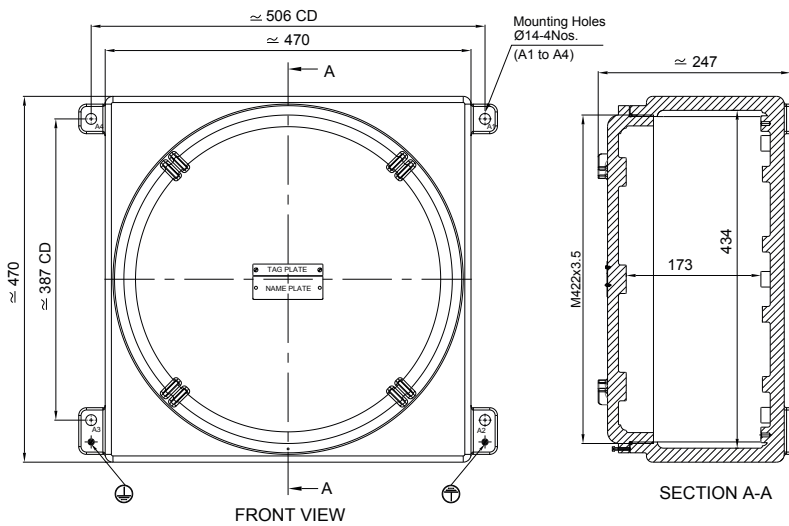
GUB 05 AL



Maximum number of cable glands

M	Side		NPT	Side	
	A/B	C/D		A/B	C/D
12			1/2	24	24
16			3/4	20	20
20	24	24	1	12	12
25	20	20	1 1/4	9	9
32	12	12	1 1/2	6	6
40	9	9	2	4	4
50	6	6	2 1/2		
63	4	4	3		
75					
85					

GUB 06 AL



Maximum number of cable glands

M	Side		NPT	Side	
	A/B	C/D		A/B	C/D
12			1/2	27	27
16			3/4	23	23
20	27	27	1	14	14
25	23	23	1 1/4	11	11
32	14	14	1 1/2	6	6
40	11	11	2	5	5
50	6	6	2 1/2	3	3
63	5	5	3		
75	3	3			
85					



Ex d IIC Enclosure Series TBE



- + Flameproof aluminium or stainless steel enclosure system suitable for assembly of terminals and industrial type components
- + Available in aluminium or stainless steel
- + For gas group IIC

Included in delivery

Enclosure system consisting of base and lid with screws, external earth connection and external brackets

Technical data

Explosion protection	II 2 G Ex db IIC T6/T5 Gb II 2 D Ex tb IIIC T80°C...T95°C Db
Material	Copper free aluminium Stainless steel 1.4404/316L
Colour	Aluminium: RAL 7035, light grey Stainless steel: unpainted, painting on request
Ingress protection	IP66 to EN 60529
Surface	Powder coating
Impact resistance	7 Joule to EN 60079-0
Temperature range	-60 °C to +75 °C
Certificates	ITS 14 ATEX 18169X IECEX ITS 14.0070X



Ex d IIC Enclosure Series TBE

Product overview

Order No.	Type	External dimensions H x W x D (mm)	Internal dimensions H x W x D (mm)	Weight (g)
Aluminium				
40.10 10 10	TBE 100T AL	116 x 116 x 98	98 x 98 x 66	1100
40.10 10 13	TBE 130T AL	148 x 148 x 107	127 x 127 x 71	1800
40.10 10 16	TBE 160T AL	180 x 180 x 116	157 x 157 x 78	2900
Stainless Steel				
40.20 10 10	TBE 100T SS	116 x 116 x 98	98 x 98 x 66	3000
40.20 10 13	TBE 130T SS	148 x 148 x 107	127 x 127 x 71	5200
40.20 10 16	TBE 160T SS	180 x 180 x 116	157 x 157 x 78	8600

Accessories

Order No.	Mounting plate	Dimensions Ø x T (mm)
40.10 10 10	40.30 10 10	96 x 1.5
40.10 10 13	40.30 10 13	125 x 1.5
40.10 10 16	40.30 10 16	155 x 1.5
40.20 10 10	40.30 10 10	96 x 1.5
40.20 10 13	40.30 10 13	125 x 1.5
40.20 10 16	40.30 10 16	155 x 1.5

Terminal mounting

DIN rail	Phoenix Contact																
	TS 35	TS 35	TS 35	TS 35	TS 35	TS 35	TS 35	TS 35									
Rated nominal cross section (mm²)	2,5	4	6	10	16	25	35										
Rated voltage (V)	690	690	690	690	690	690	690										
Terminal width (mm)	5.2	6.2	8.2	10.2	12.2	16.2	16.2										
Terminal type																	
Enclosure type	UT 2,5	UT 4	UT 6	UT 10	UT 16	UT 35	UT 35										
40.10 10 10	8	6	4	3													
40.10 10 13	16	12	10	6	4												
40.10 10 16	20	16	12	8	6	4	4										
40.20 10 10	8	6	4	3													
40.20 10 13	16	12	10	6	4												
40.20 10 16	20	16	12	8	6	4	4										

Other suppliers on request



Ex d IIC Enclosure Series TBE

Technical details

Power dissipation in Watt

Type	Temperature class	T6			T5				
		T80 °C			T95 °C				
	Maximum surface temperature								
	Maximum ambient temperature	+40 °C	+50 °C	+60 °C	+40 °C	+50 °C	+55 °C	+60 °C	+75 °C
TBE 100T AL	Maximum allowed power loss	20 W		12 W			20 W		12 W
TBE 130T AL		29 W		15 W			29 W		15 W
TBE 160T AL		41 W		24 W			41 W		24 W
TBE 100T SS		20 W		12 W			20 W		12 W
TBE 130T SS		29 W		15 W			29 W		15 W
TBE 160T SS		41 W		24 W			41 W		24 W

Maximum number of cable glands

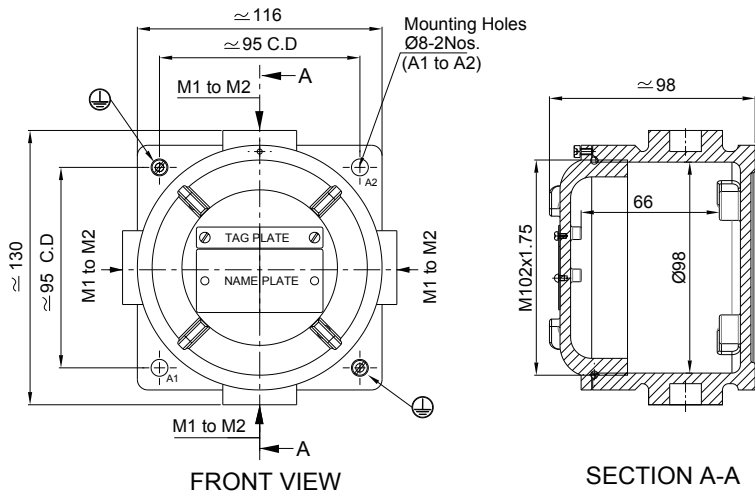
M	NPT	Side	Type					
			TBE 100T AL	TBE 130T AL	TBE 160T AL	TBE 100T SS	TBE 130T SS	TBE 160T SS
20	1/2"	A/B	1	1	1	1	1	1
20	1/2"	C/D	1	2	3	1	2	3
25	3/4"	A/B	1	1	1	1	1	1
25	3/4"	C/D	1	2	3	1	2	3
32	1"	A/B		1	1		1	1
32	1"	C/D						
40	1 1/4"	A/B			1			1
40	1 1/4"	C/D						



Ex d IIC Enclosure Series TBE

Technical details

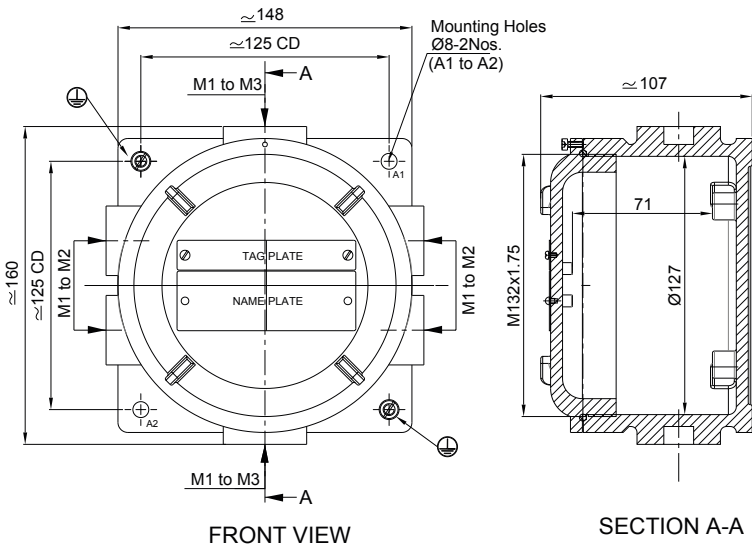
TBE 100T AL / TBE 100T SS



Maximum number of cable glands

M	Side		NPT	Side	
	A/B	C/D		A/B	C/D
12	1	1	1/2	1	1
16	1	1	3/4	1	1
20	1	1	1		
25	1	1	1 1/4		
32			1 1/2		
40			2		
50			2 1/2		
63			3		
75					
85					

TBE 130T AL / TBE 130T SS



Maximum number of cable glands

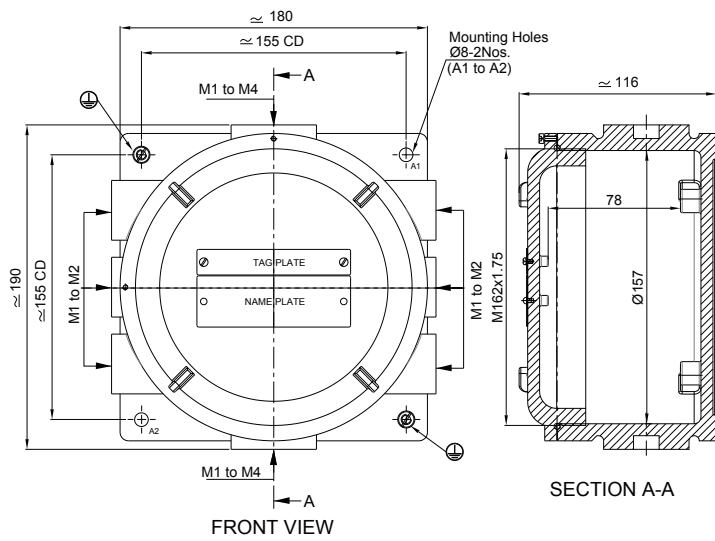
M	Side		NPT	Side	
	A/B	C/D		A/B	C/D
12	1	2	1/2	1	2
16	1	2	3/4	1	2
20	1	2	1	1	
25	1	2	1 1/4		
32	1		1 1/2		
40			2		
50			2 1/2		
63			3		
75					
85					



Ex d IIC Enclosure Series TBE

Technical details

TBE 160T AL / TBE 160T SS



Maximum number of cable glands

M	Side		NPT	Side	
	A/B	C/D		A/B	C/D
12	1	3	1/2	1	3
16	1	3	3/4	1	3
20	1	3	1	1	
25	1	3	1 1/4	1	
32	1		1 1/2		
40	1		2		
50			2 1/2		
63			3		
75					
85					



812170 03/2017 DC 2.000

ROSE Systemtechnik GmbH
Erbeweg 13- 15 | D-32457 Porta Westfalica
Fon +49 (571) 50 41 0 | Fax +49 (571) 50 41 6
E-Mail rose@rose-pw.de | Web www.rose-pw.de



A Phoenix Mecano Company