



제18-0055-001호

안 전 인 증 서

Phoenix Mecano, Inc.

7330 Executive Way, Frederick, MD 21704, USA

위 사업장에서 신청하는 아래의 품목이 「산업안전보건법」 제34조 및 같은 법 시행규칙 제58조의4제4항에 따른 안전인증 심사 결과 안전·보건기준에 적합하므로 안전인증표시의 사용을 인증합니다.

품 목

Junction Box

형식 · 모델 / 용량 · 등급 / 인증번호

| 형식·모델 | 용량 · 등급 | 인증번호 |
|-----------|----------------------------------|---------------|
| 05 232011 | 690VAC, Max. 10A Ex e II B T5 | 18-GA4BO-0055 |

인 증 기 준

방호장치 안전인증 고시(고용노동부고시 제2016-54호)

인 증 조 건

Tamb : -30℃ ~ +82℃, 뒷면참조

[BOX 규격 : 232mm(L)×202mm(W)×111mm(D)]

2018 년 01월 16일

한국가스안전공사 사장





인 증 조 건

1. 제조공장:

7330 Executive Way, Frederick, MD 21704, USA에 위치한 Phoenix Mecano, Inc.에서 생산한 제품 중 아래 인증범위의 제품에 한함.

2. 제품개요

The Connection and Junction Box and Control Box type 05.***** and 15.***** consists of enclosures out of aluminium in the type of protection Increased Safety "e" and Protection by enclosure "tb", which are provided for stationary assembly. They are used to accommodate switchgear, control gear and measuring instruments, as well as terminals intrinsically safe and non-intrinsically safe circuits and may optionally be provided with actuator elements, indicator lights and inspection windows. The components for intrinsically safe circuits are marked, e.g. in light blue. Connection is by means of Ex-type cable glands. The empty enclosures as well as all mounted and attached components have been tested and certified under a separate examination certificate. The maximum number of terminal blocks that can be fitted has been in the data sheets on the basis of a calculation program. The degree of protection IP66 will be guaranteed only by proper installation of the cable glands. Technical Data, Nomenclature, Notes for manufacturing and operation and Assembly tables : see Annex(IECEX PTB 08.0006, Issue 1)

3. 인증범위: 본 인증서는 아래의 형식번호에 한하여 유효함

품목 명 Junction Box, 모델 명 05 232011

Assembly table : 첨부참조

4. 안전한 사용을 위한 조건

가. 설치 및 사용 전 사용설명서를 참조할 것

나. Sealing fitting 또는 Cable gland는 동등이상의 방폭인증을 받은 제품을 사용할 것

다. Enclosures with a coating must not be used in areas affected by charge-producing processes, mechanical friction and separation processes, electron emission(e.g. in the vicinity of electrostatic coating equipment), and pneumatically conveyed dust.

5. 인증(변경)사항

IECEX PTB 08.0006 issue No. 1에 의해 작성되었음

6. 그 밖의 사항

안전인증품의 품질관리, 확인심사 수검, 변경사항 신고 등 인증 받은 자의 의무 준수



[첨부]

Maximum amount of conductors, depending on diameter and permitted constant current acc. previous enclosure size. Every inserted conductor and every internal connecting conductor counts as one conductor; bridges and earth conductors are not mentioned.

| Strom / A Current / A | Querschnitt in mm Diameter in mm | | | | | | | | | | | | | | |
|--------------------------|--|-----|----|----|----|----|----|----|----|----|----|-----|-----|-----|-----|
| | 1,5 | 2,5 | 4 | 6 | 10 | 16 | 25 | 35 | 50 | 70 | 95 | 120 | 150 | 185 | 240 |
| 6 | | | | | | | | | | | | | | | |
| 10 | 62 | | | | | | | | | | | | | | |
| 16 | 21 41 160 | | | | | | | | | | | | | | |
| 20 | 8 24 46 | | | | | | | | | | | | | | |
| 25 | 11 26 50 | | | | | | | | | | | | | | |
| 35 | 7 19 49 | | | | | | | | | | | | | | |
| 50 | 2 16 40 | | | | | | | | | | | | | | |
| 63 | 5 19 67 | | | | | | | | | | | | | | |
| 80 | 7 21 75 | | | | | | | | | | | | | | |
| 100 | 9 19 | | | | | | | | | | | | | | |
| 125 | 8 | | | | | | | | | | | | | | |
| 160 | | | | | | | | | | | | | | | |
| 200 | Bestückungen in diesem Bereich erfordern einen gesonderten Erwärmungsnachweis. Mounting in this area needs a separate heat certification. | | | | | | | | | | | | | | |
| 225 | | | | | | | | | | | | | | | |
| 250 | | | | | | | | | | | | | | | |
| 315 | | | | | | | | | | | | | | | |
| 400 | | | | | | | | | | | | | | | |
| 500 | | | | | | | | | | | | | | | |
| | 68 | 56 | 46 | 34 | 14 | 11 | 9 | 9 | | | | | | | |

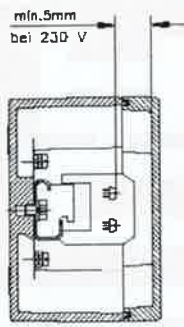
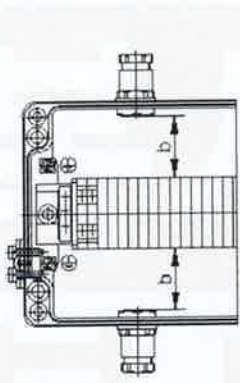
In diesem Bereich kann unter Beachtung der Hinweise und der festgelegten Einbaumaße im Gehäuse beliebig zusätzlich bestückt werden.
 In this range you may additionally mount by regarding the notice of the fixed mounting dimensions inside the enclosure.

Max. number of terminals, depending on enclosure dimension and cross-section or max. cross-section acc. mounted terminals.

Mindestabstände zwischen Reihenklemmen und Gehäusewand
 Minimum distance between terminal blocks and enclosure wall

Abstand zur Seite
 Distance towards side

Abstand zum Deckel
 Distance towards lid



Bei zweireihigem Klemmenleisteinbau: Abstand zwischen den Klemmenreihen 1,5 x b
 With double-row terminal installation: distance between the terminal rows 1.5 x b

| Leiterquerschnitt Nominal cross-section (mm ²) | min. Abstandsmaß min. distance dimension b (mm) |
|--|---|
| 1,5 | 9,6 |
| 2,5 | 11,2 |
| 4 | 14,4 |
| 6 | 17,2 |
| 10 | 21,6 |
| 16 | 28,4 |
| 25 | 49,8 |
| 35 | 61,2 |
| 50 | 98,2 |
| 70 | 113,6 |
| 95 | 129,6 |
| 120 | 145,6 |
| 150 | 161,6 |
| 185 | 177,6 |
| 240 | 212 |

