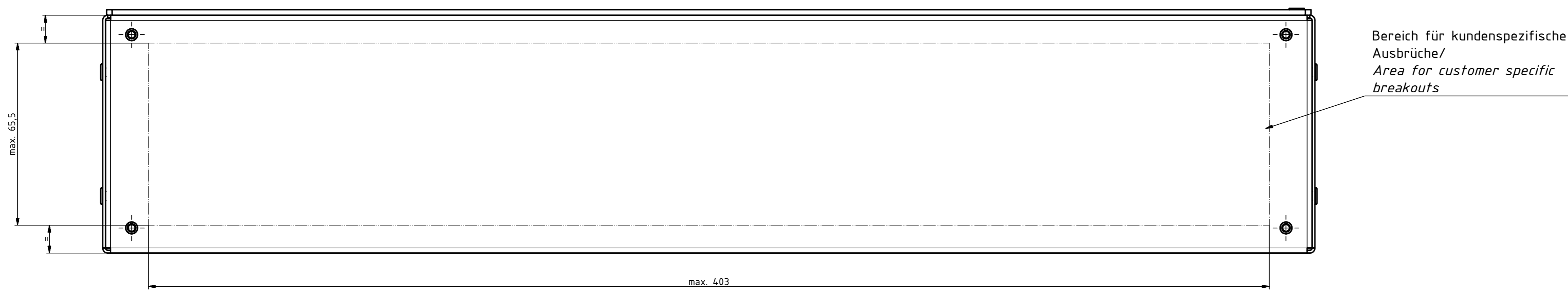
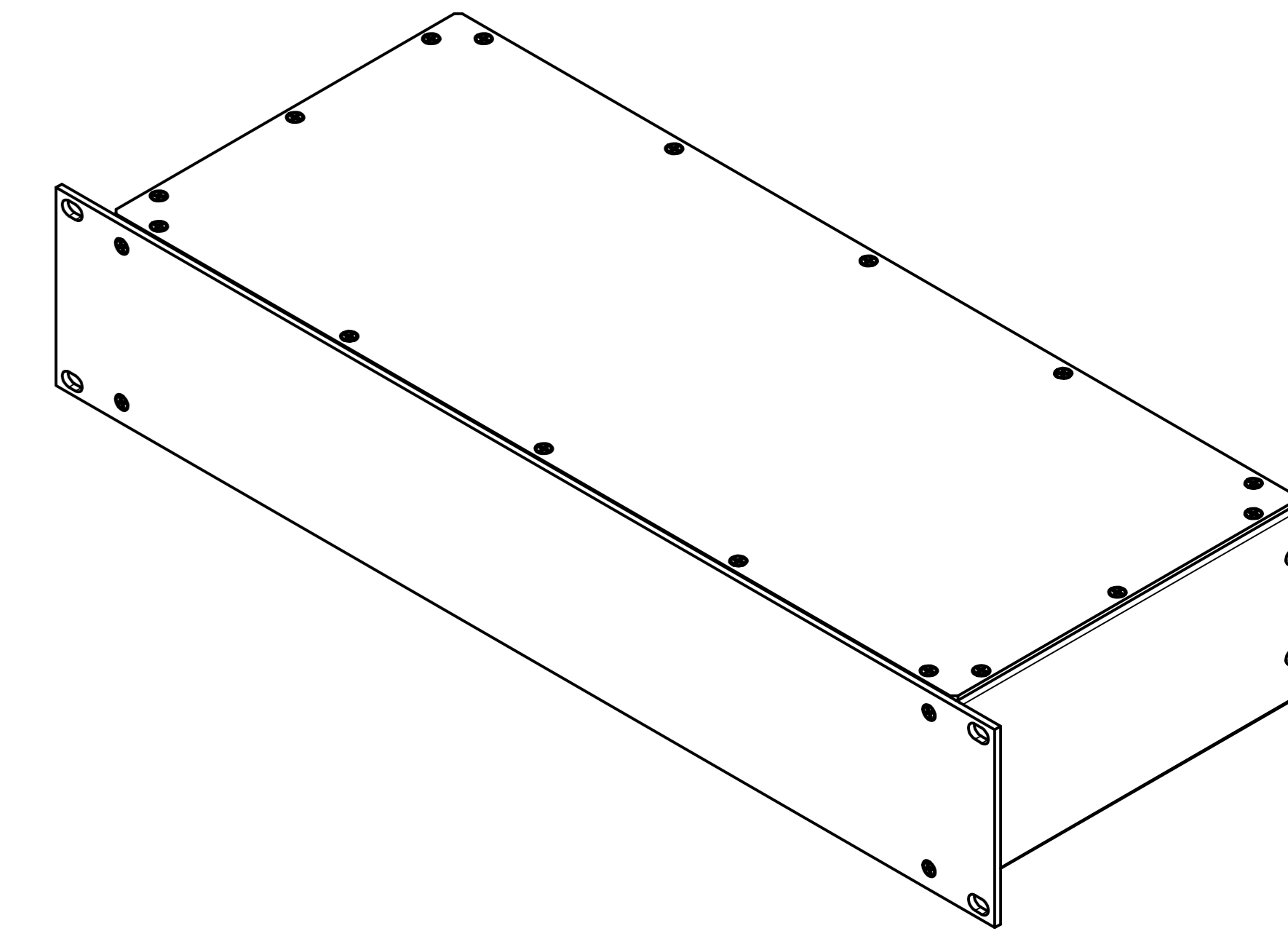


Frontansicht ohne Frontplatte / Front view without frontplate



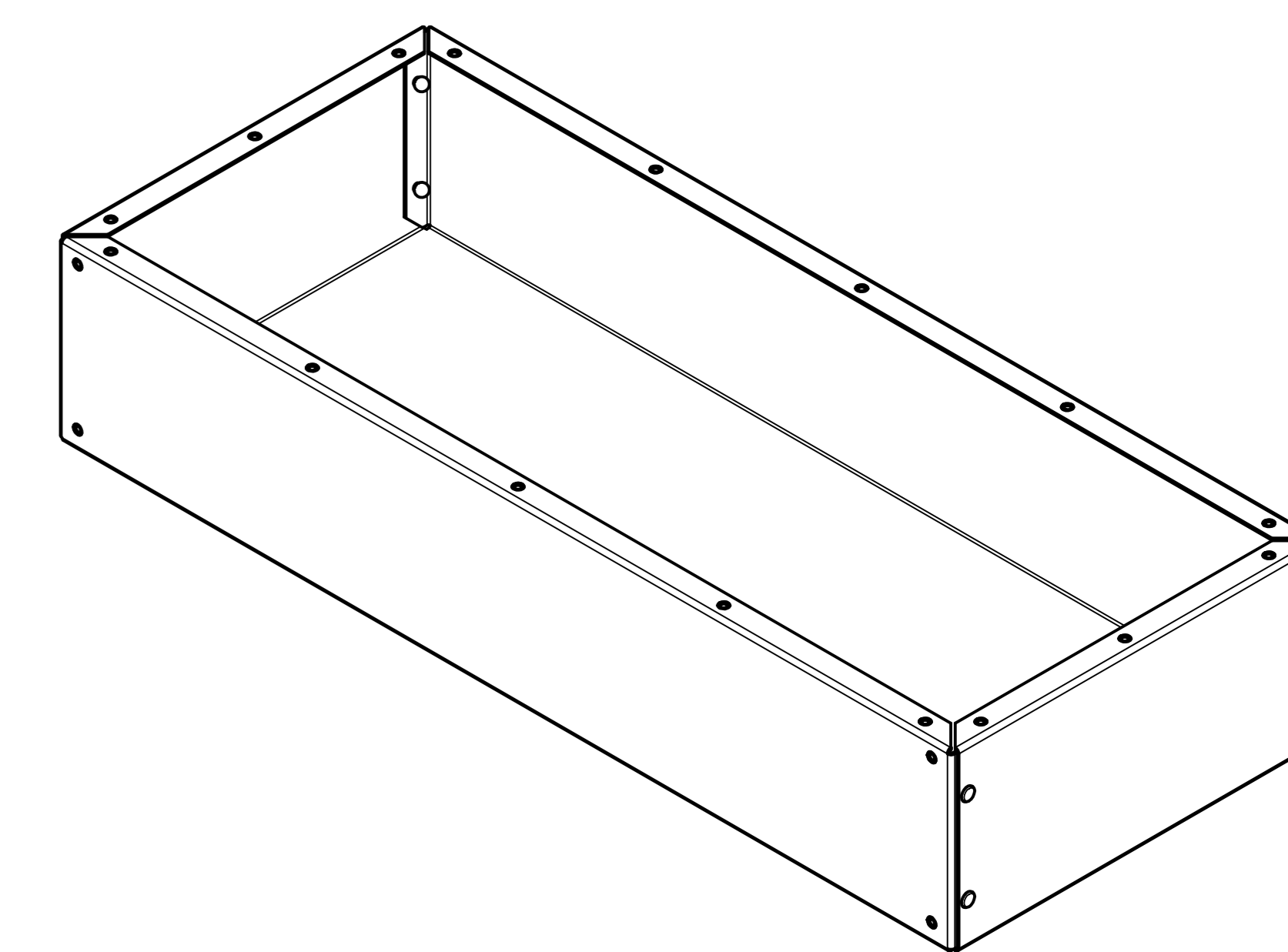
(1 : 2)
ISO-Ansicht / ISO-View



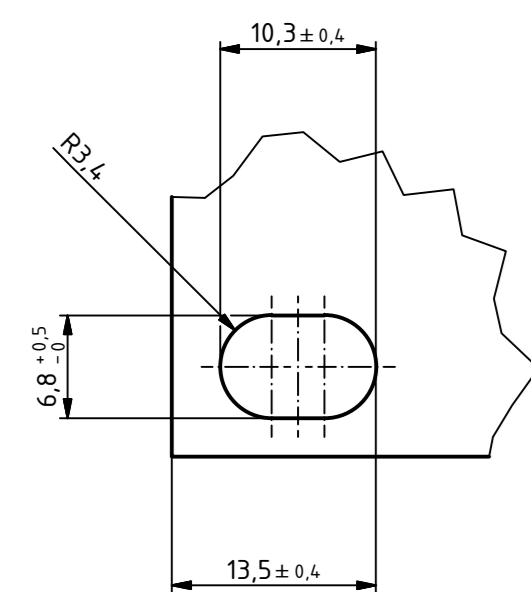
Frontansicht / Front view



ISO-Ansicht/ISO-View (1 : 2)
Ohne Deckel, Frontplatte & Schrauben /
Without lid, frontplate & screw

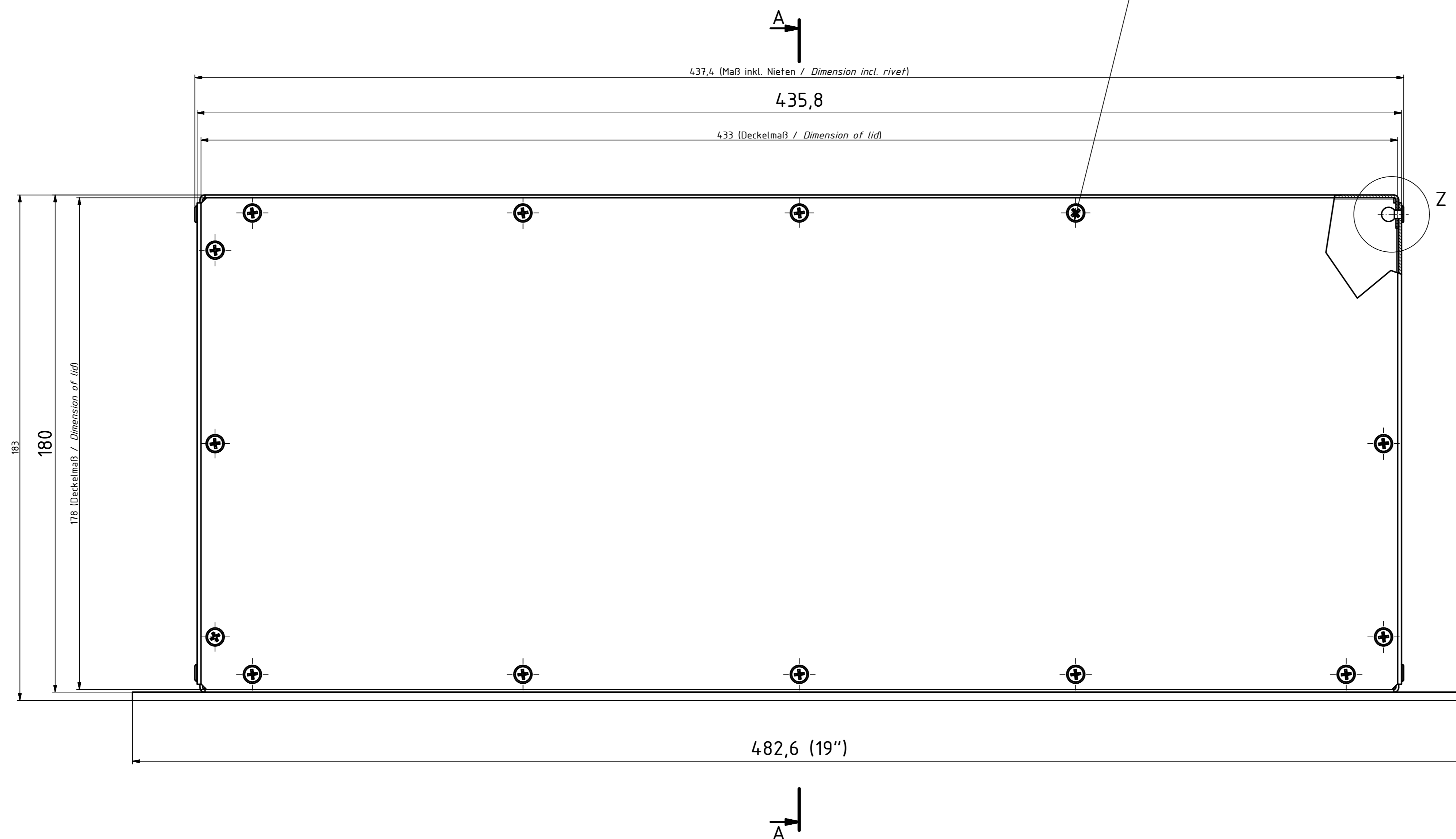
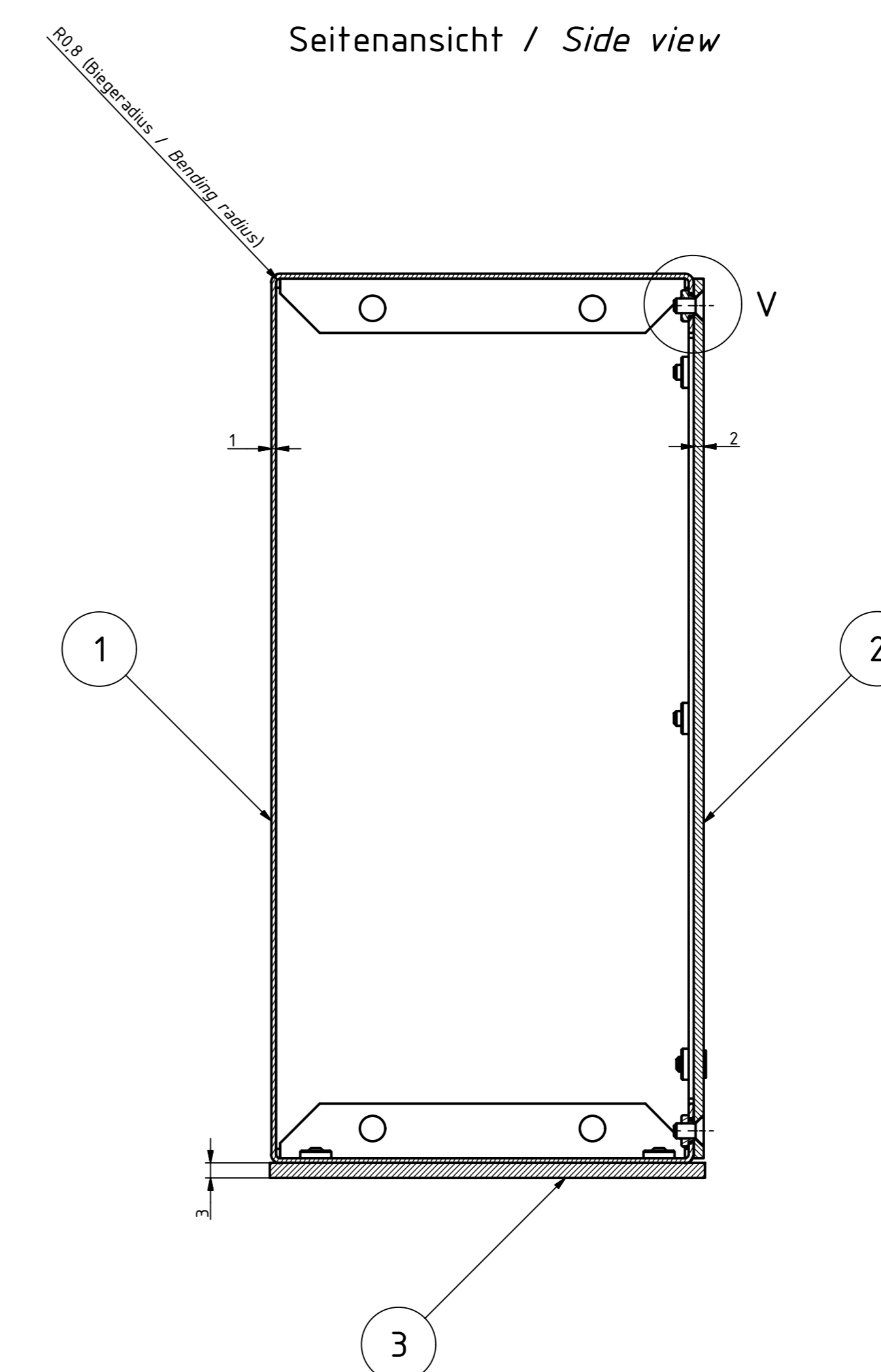


R (2 : 1)



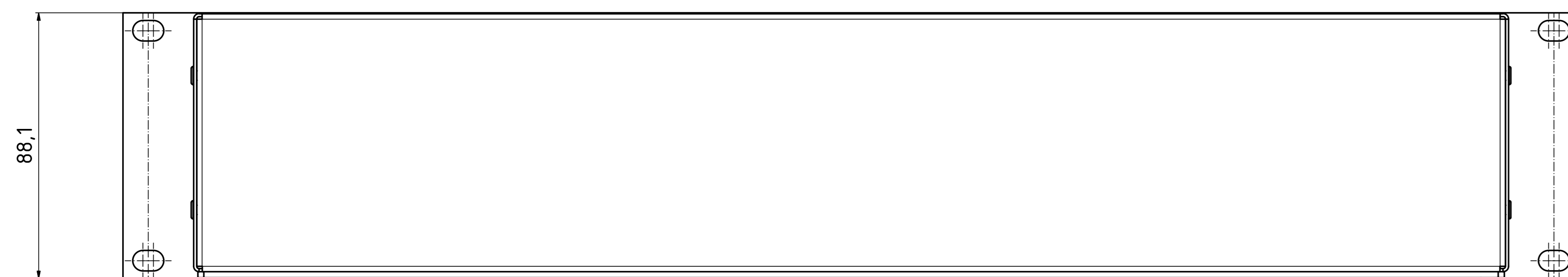
A-A (1 : 1)

Seitenansicht / Side view



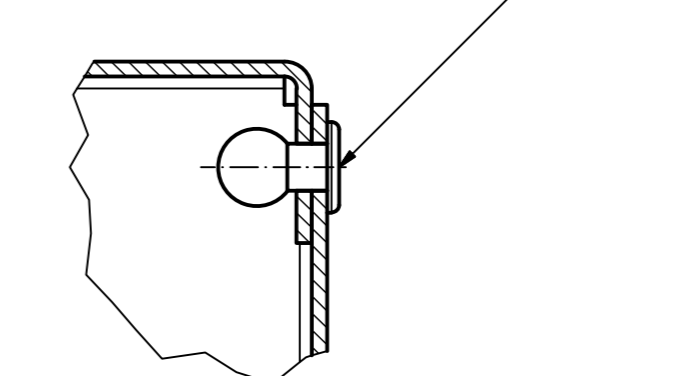
Rückansicht / Rear view

Unten / Back

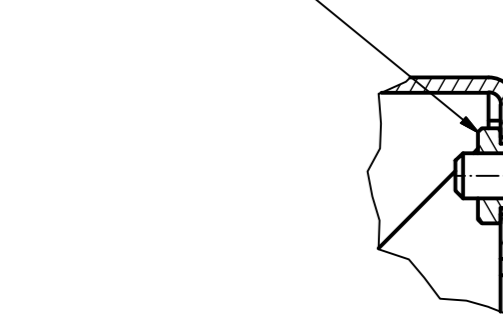


Oben / Top

Z (2 : 1)



V (2 : 1)



Stückliste / Bill of material

Pos.	St.	Modell / Model	Werkstoff / Material	Zeichnung / Drawing	Material-Nr.	Sonstiges / ect.
1	1	2HE Korpus / 2U corpus 3mm	EN AW-5754-H22-NQ (Alu roh/Alu raw)	0A 5425.001.0		
2	1	2HE Deckel / 2U lid 2mm	EN AW-5754-H22-NQ (Alu roh/Alu raw)	2A 5425.002.0		uml. 1mm kleiner wie Pos.1 / 1mm less than Pos.1
3	1	2HE Frontplatte / 2U frontplate 3mm	EN-AW-5754-H22-EQ-E6/C-0, Schnittkanten blank / Cutting edges raw aluminium	2A 5425.003.0		19"-Abmessungen (HHE) / 19" -size (IU)
4	20	KVT-CLS-H3-1	nichtrostender Stahl 18/8 (AISI 302/303) / Stainless steel 18/8 (AISI 302/303)		59000192	
5	8	BLINT 3337A AL/ST 3.0x6			59000191	Verwendung für Pos.1 / Use for Pos.1
6	20	SHR S M3X6 DIN 945	AZ		59000337	

Artikel-Nr. / Art.-No.:
 Werkstoff- /
 Material:
 Allg.Tol.: DIN ISO 2768-mk für Bearbeitung
 Gen.Tol.: DIN ISO 2768-mk for machining
 Maßstab / Scale: 1:1 (1:2;2:1)
 Zeichnungs-Nr. / Drawing-No.:
 0G 5425.013.01
 Ben. Erstellt nach Vorlage / Dim.: constructed by specification
 Artikel / Article:
 IC/Z 18280
 2HE/U, 84 TE/HP, 180mm
 Grundzeichnung/Basic drawing

BOPLA
 A Phoenix Mecano Company

DISK: 2903690 idw
 Datum/Date: 25.08.2016 NR Blatt/Sheet: 1 / 1
 Datum/Date Unterschrift/Signature

geprüft / checked
 Fertigungsfreigabe / Production release

"Schutzzeichen nach DIN ISO 1628:2008, nach DIN ISO 1628:2008, "Please pay attention to copyright note, DIN ISO 1628"