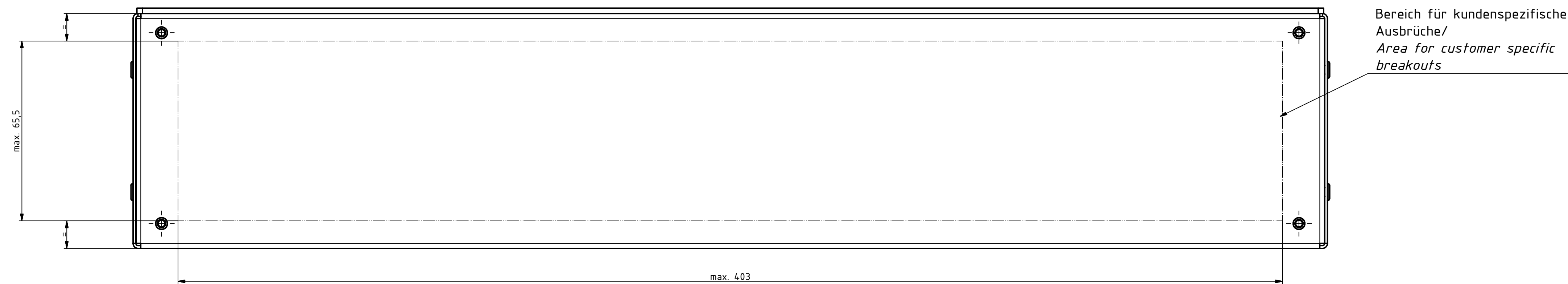
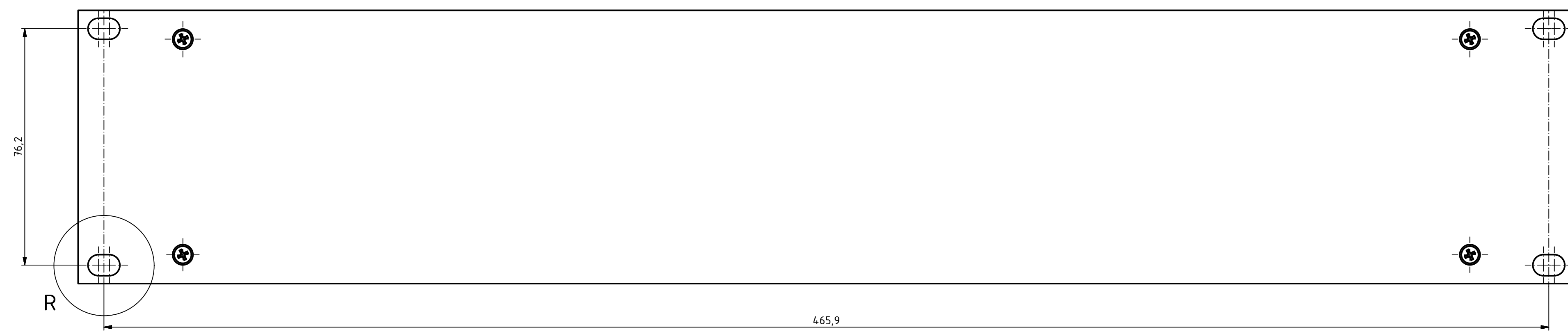


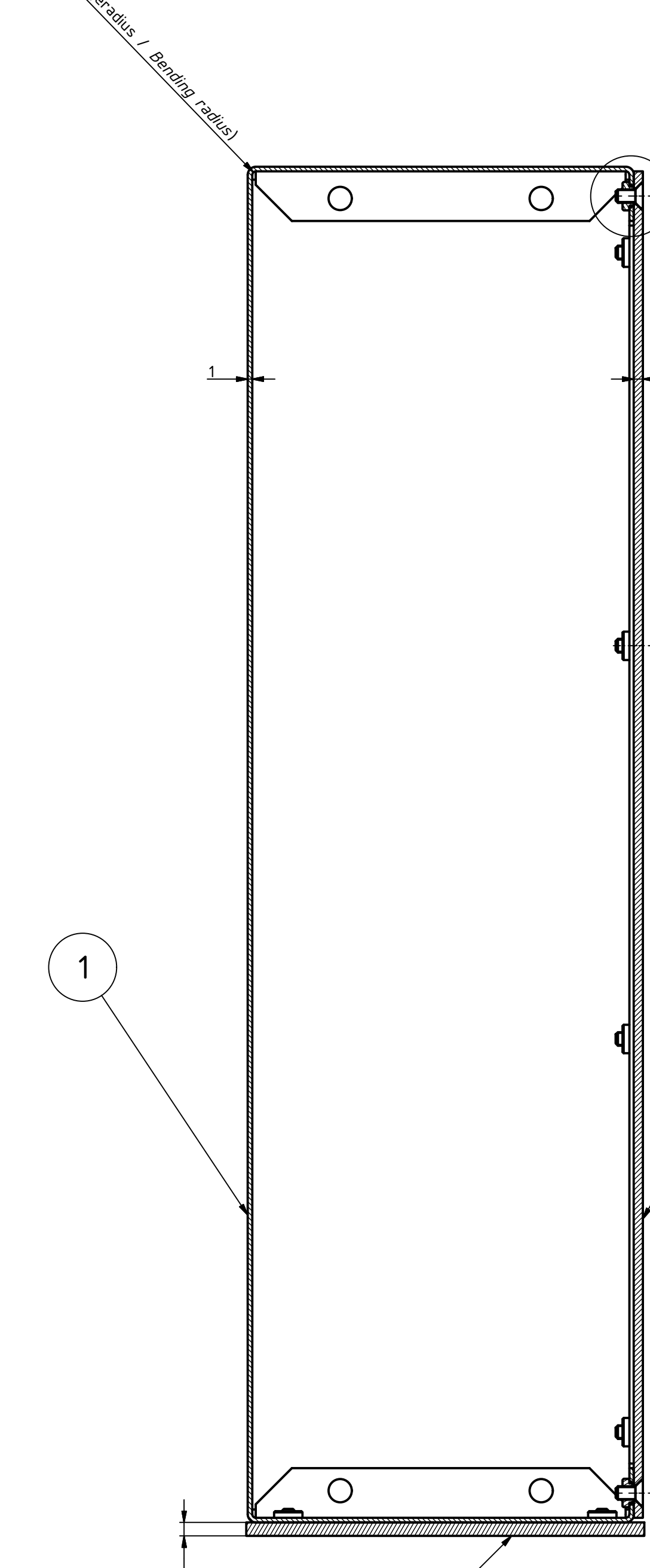
Frontansicht ohne Frontplatte / Front view without frontplate



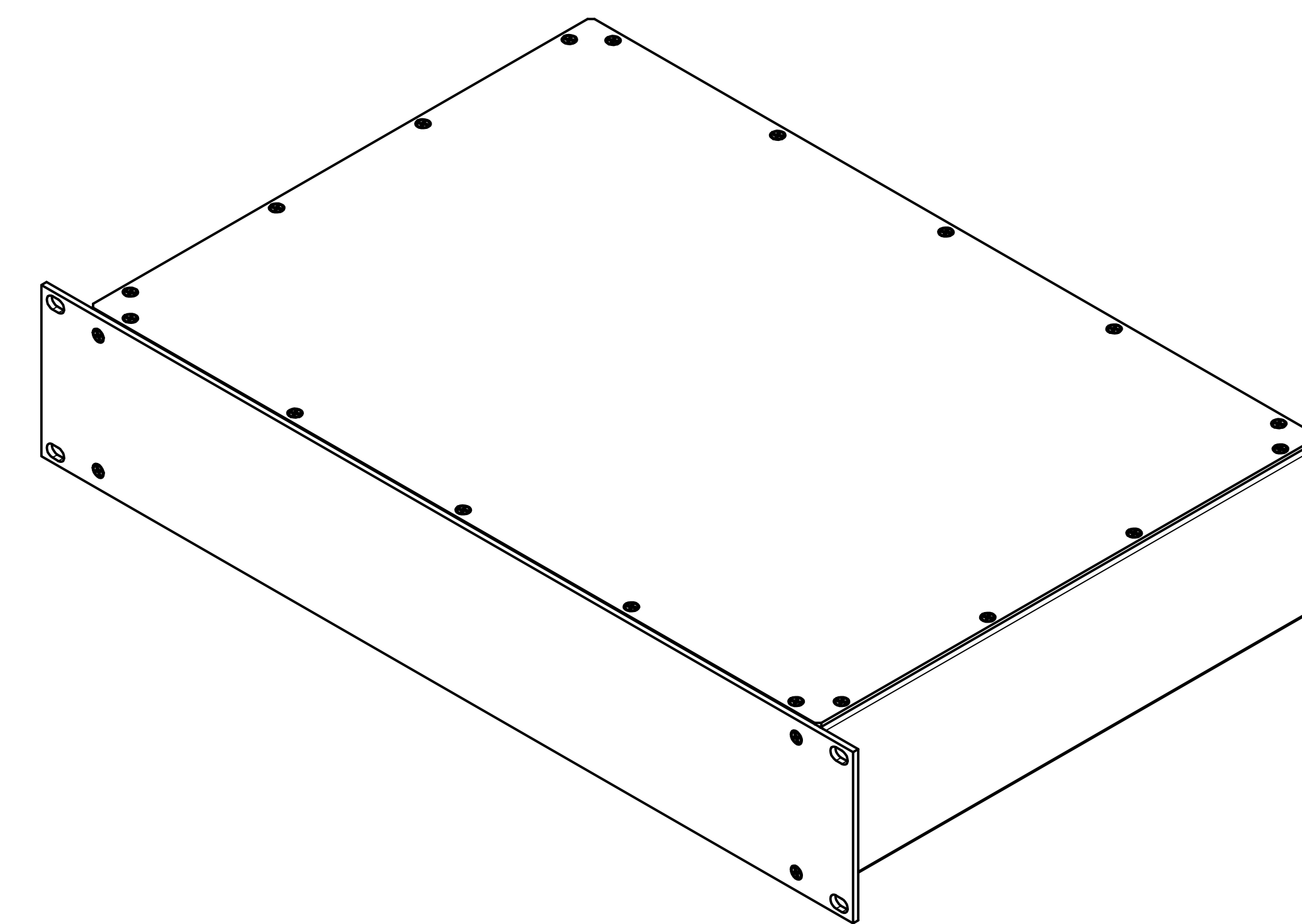
Frontansicht / Front view



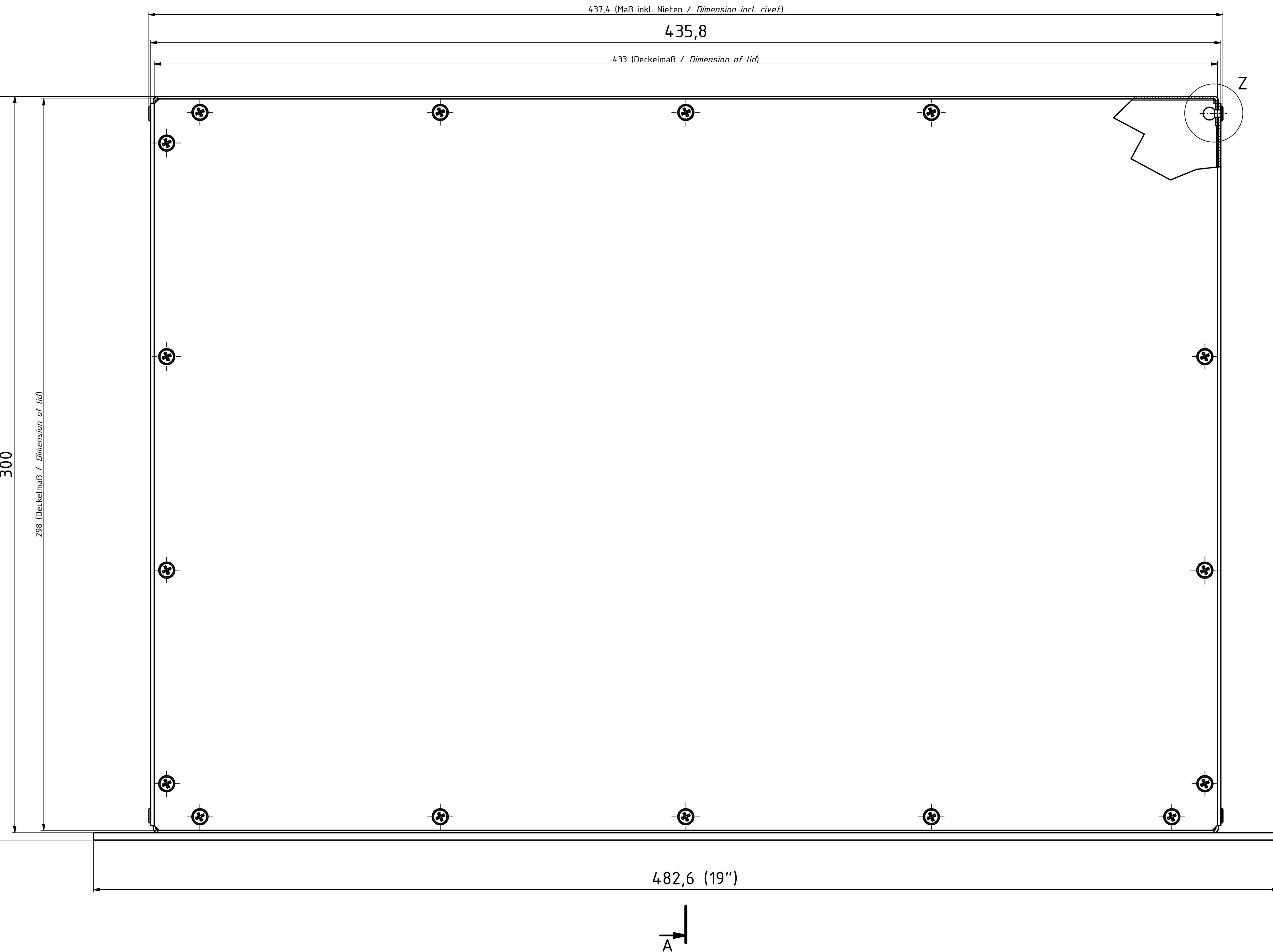
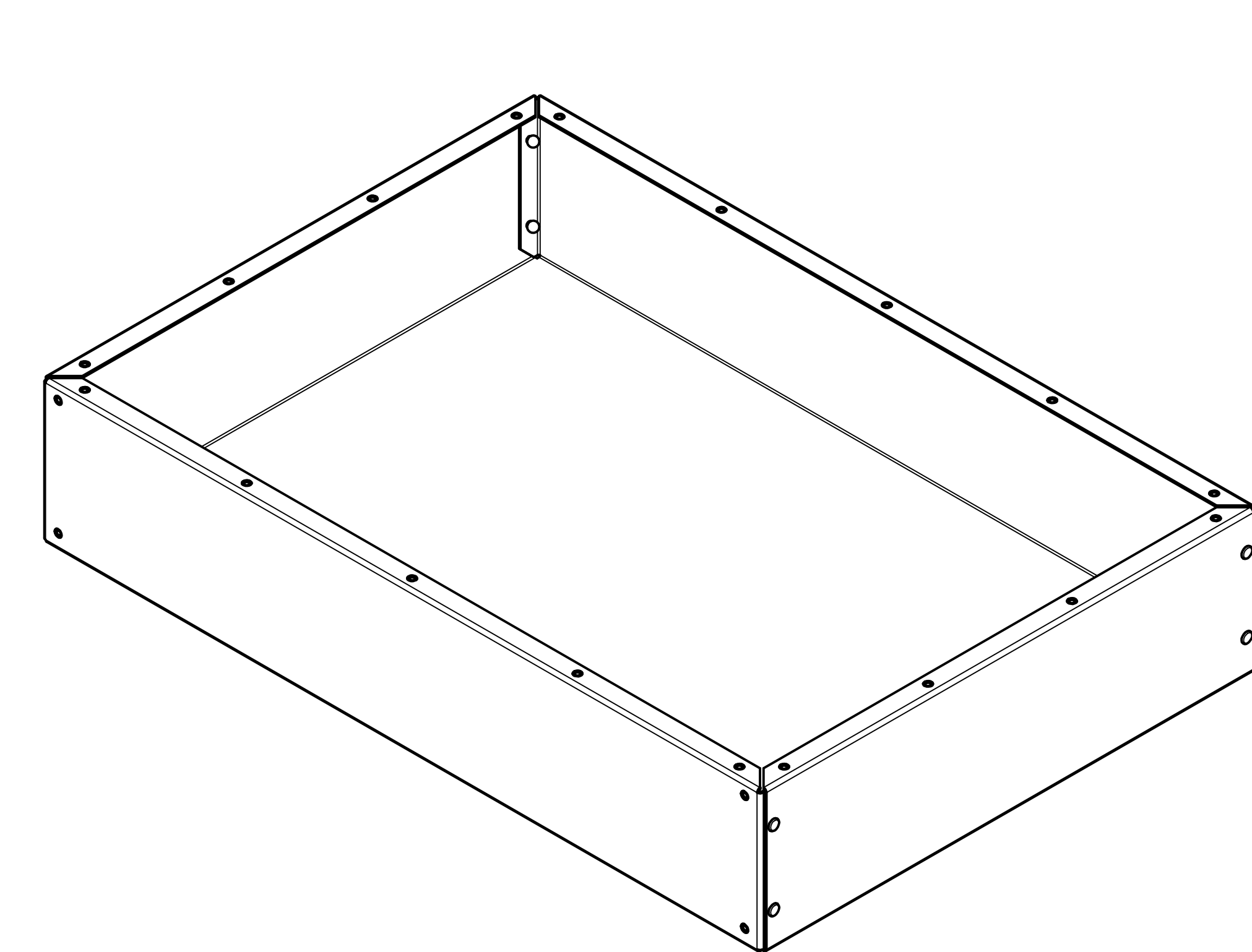
A-A (1:1) Seitenansicht / Side view



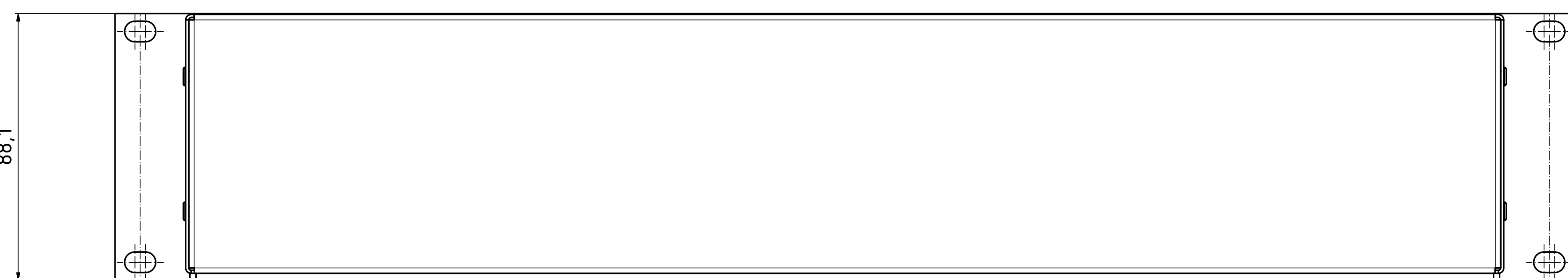
(1:2) ISO-Ansicht / ISO-View



ISO-Ansicht / ISO-View (1:2) Ohne Deckel, Frontplatte & Schrauben / Without lid, frontplate & screw



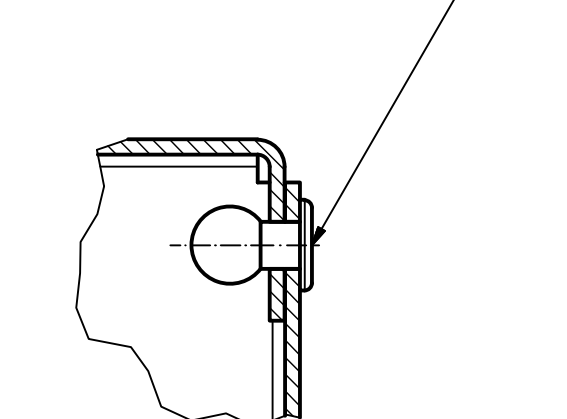
Rückansicht / Rear view



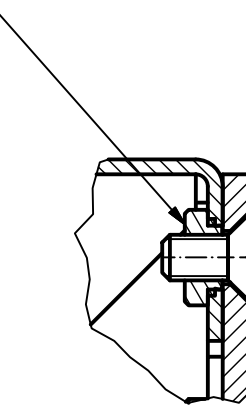
Unten / Back

Oben / Top

Z (2:1)



V (2:1)



Artikel-Nr. / Art.-No.:		Werkstoff- / Material:	
Allg. Tol.: DIN ISO 2768-mk für Bearbeitung		Gen. Tol.: DIN ISO 2768-mk for machining	
Maßstab / Scale: 1:1 (1:2;2:1)		Zeichnungs-Nr. / Drawing-No.: 0G 54.25.015.01	
Ben.: Erstellt nach Vorlage / Dim.: constructed by specification			
Artikel / Article: IC/Z 30280		ZHE/U, 84 TE/HP, 300mm	
Grundzeichnung/Basic drawing			
A.Nr. / Part-No.	Datum / DATE	DISK: 2903692.idw	Blatt / Sheet: 1 / 1
Datum / DATE	Datum / DATE	25.08.2016.RN	Unterschrift / Signature
geprüft / checked	59000191	Verwendung für Pos.1 / Use for Pos.1	Fertigungsfreigabe / Production release
59000337			

Pos.	ST	Modell	Werkstoff	Zeichnung	Material-Nr.	Sonstiges
1	1	ZHE Korpus / ZU corpus 1mm	EN AW-5754-H22-ND (Alu roh/Alu raw)	0A 5425.001.0		
2	1	ZHE Deckel / ZU lid 2mm	EN AW-5754-H22-ND (Alu roh/Alu raw)	2A 5425.002.0		uml. 1mm kleiner wie Pos.1 / 1mm less than Pos.1
3	1	ZHE Frontplatte / ZU frontplate 3mm	EN-AW-5754-H22-EG-E6/C-0, Schnittkanten blank / Cutting edges raw aluminium	2A 5425.003.0		19"-Abmessungen (H/E) / 19"-size (H/U)
4	22	KVT-CLS-M3-1	nichtrostender Stahl 18/8 (AISI 302/303) / Stainless steel 18/8 (AISI 302/303)		59000192	
5	8	BUNT 7337A AL/ST 3,0x6			59000191	
6	22	SHR S M3X6 DIN 965	A2		59000337	