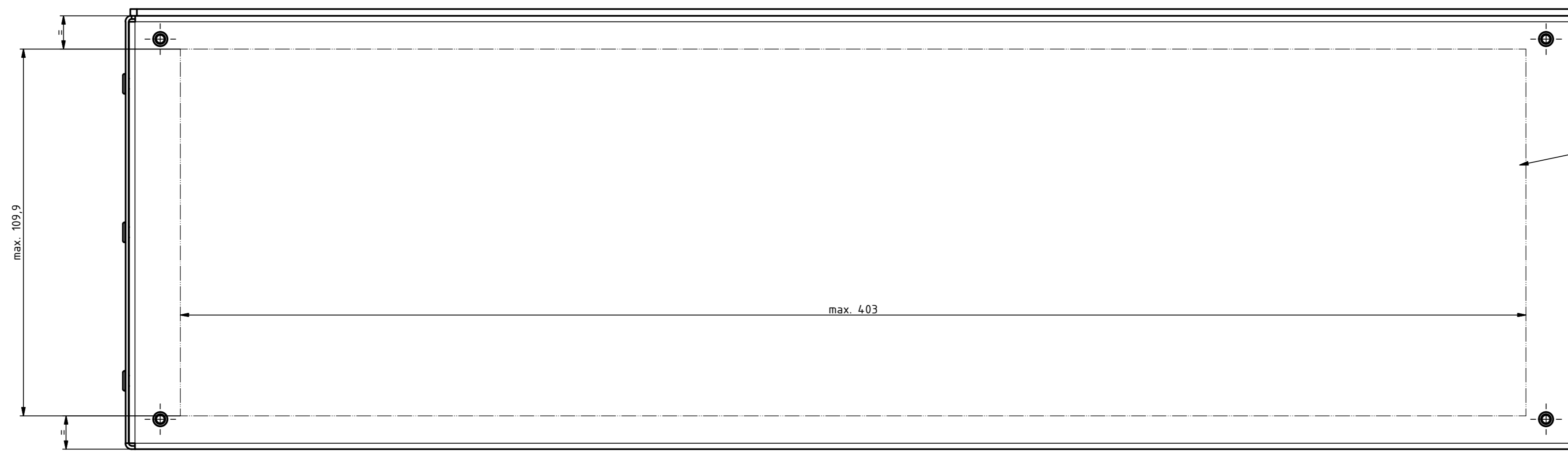
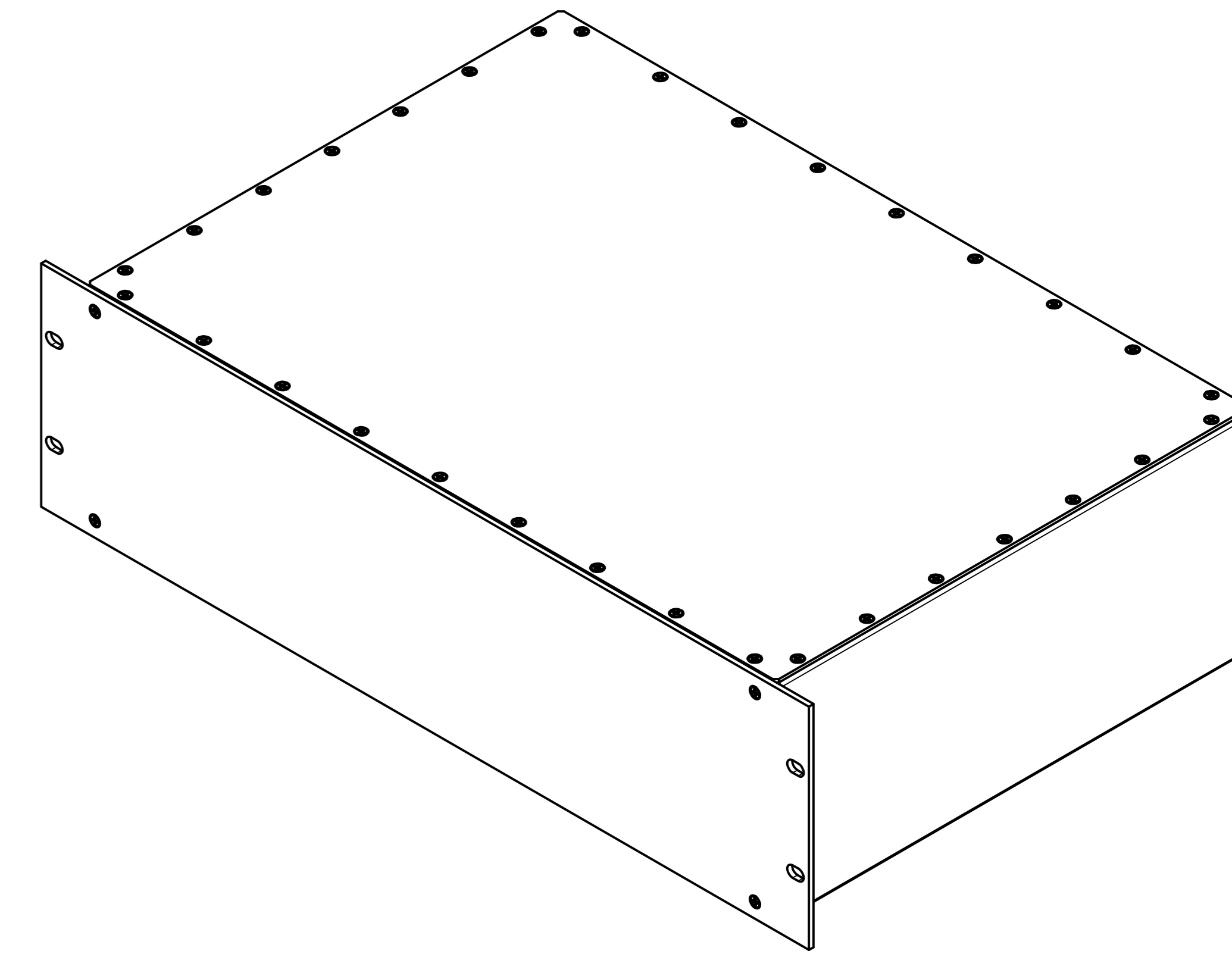


Frontansicht ohne Frontplatte /
Front view without frontplate

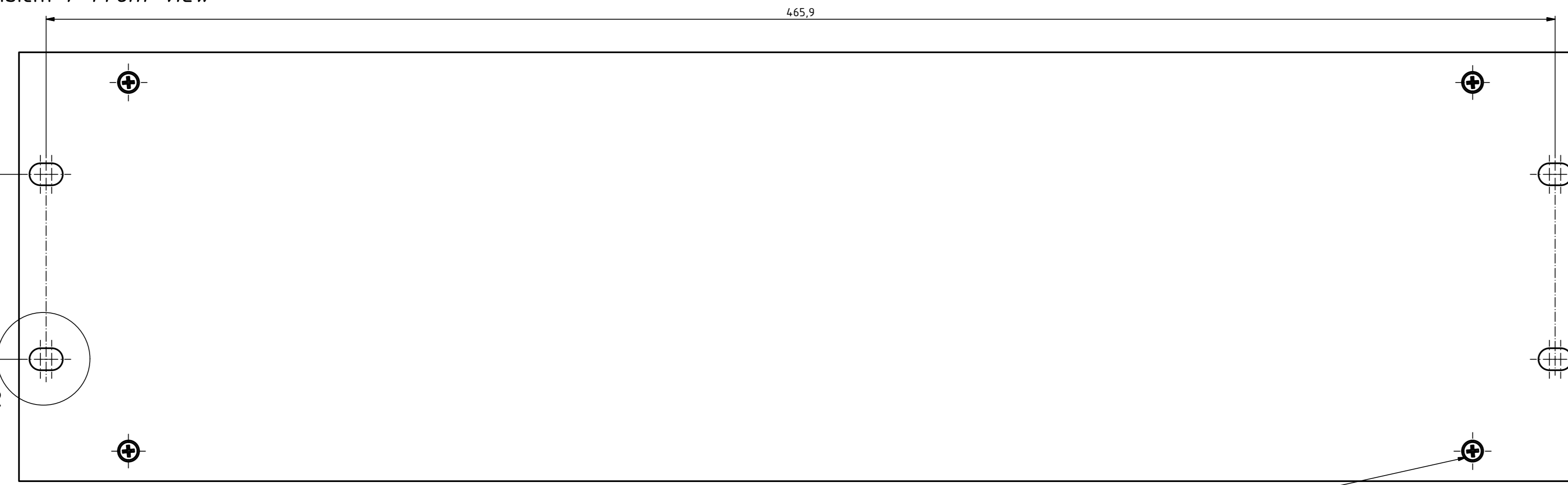


Bereich für kundenspezifische
Ausbrüche/
Area for customer specific
breakouts

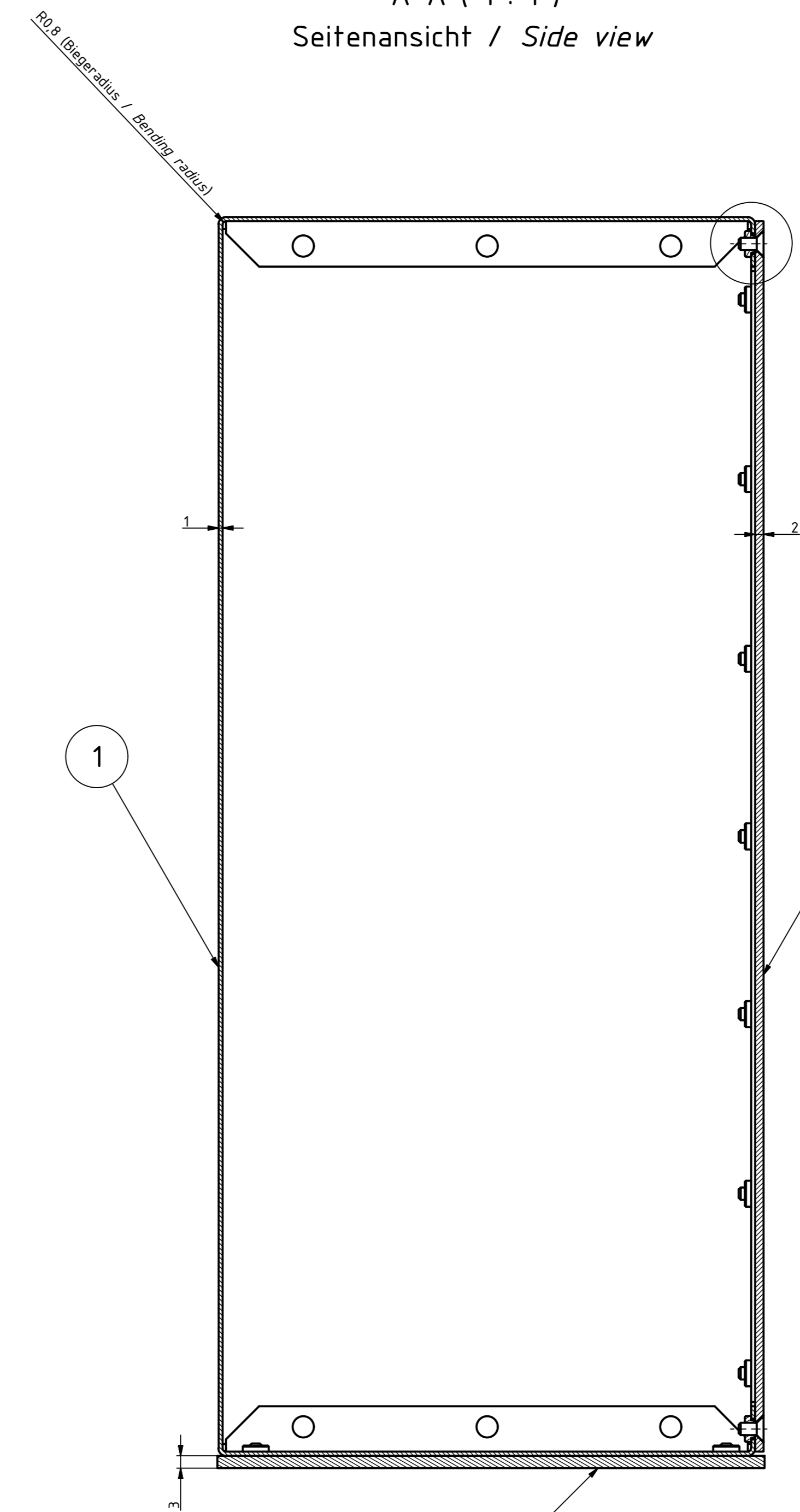
(1 : 2)
ISO-Ansicht / ISO-View



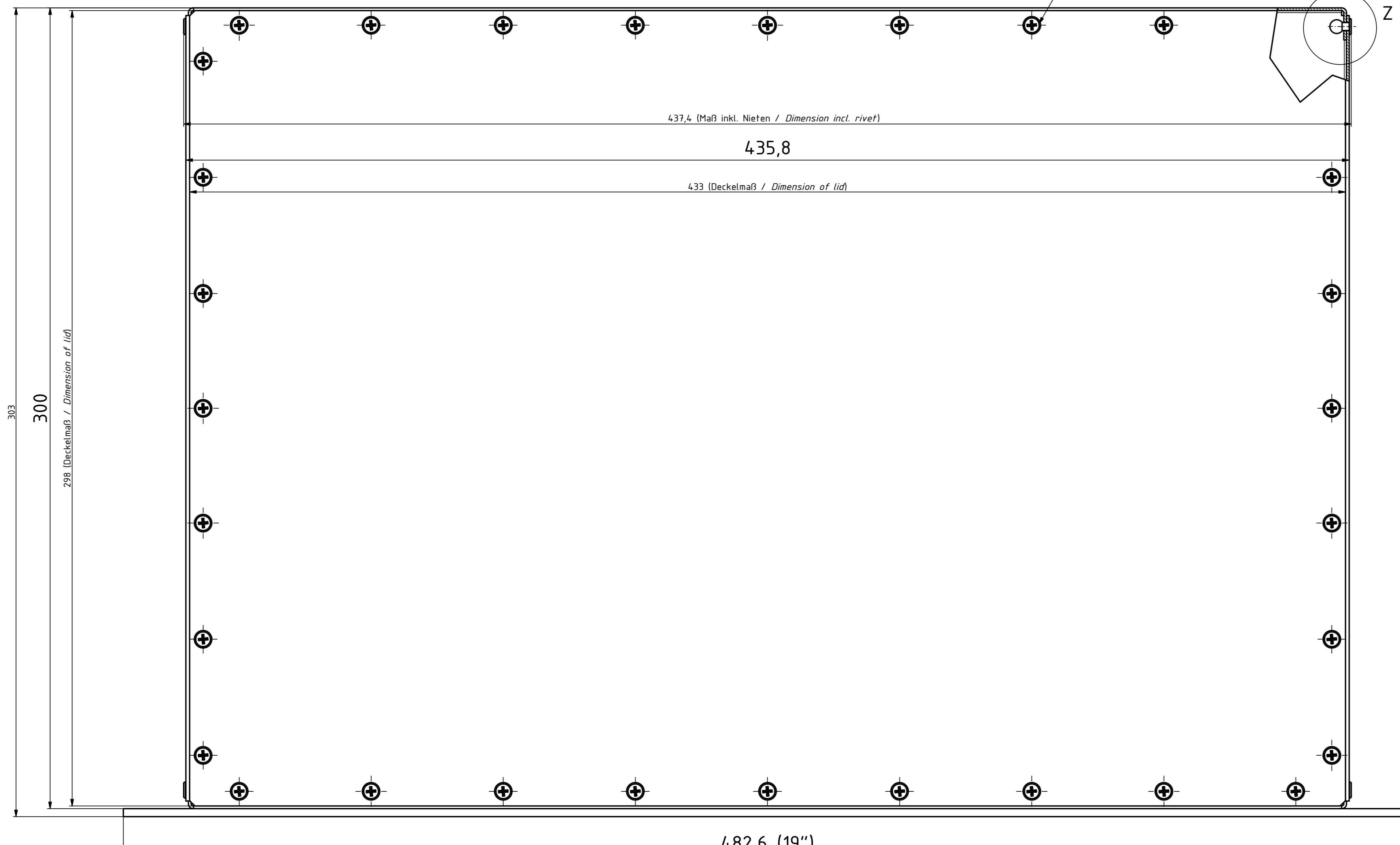
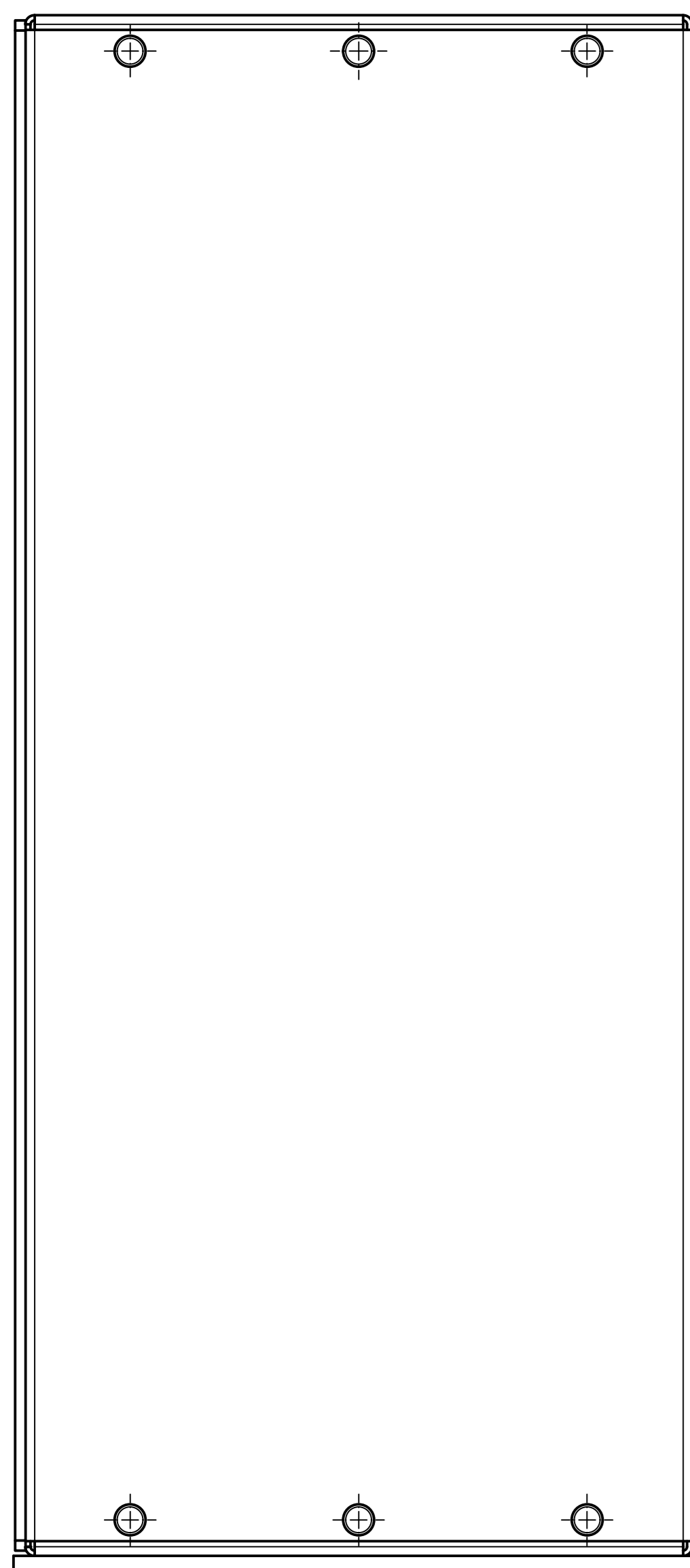
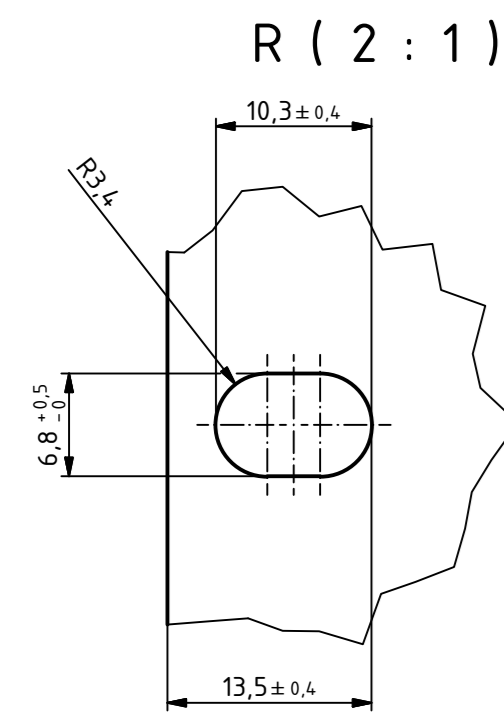
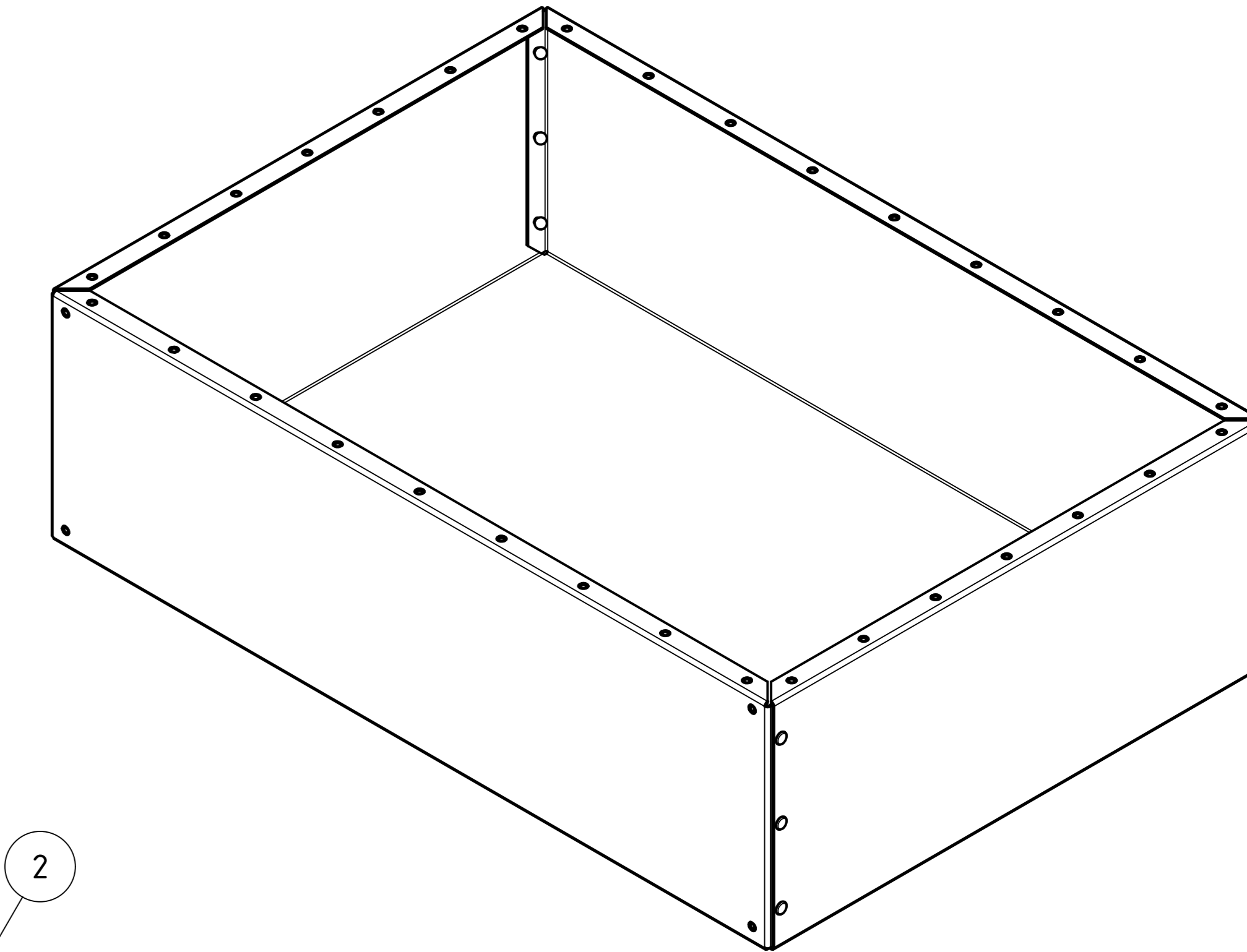
Frontansicht / Front view



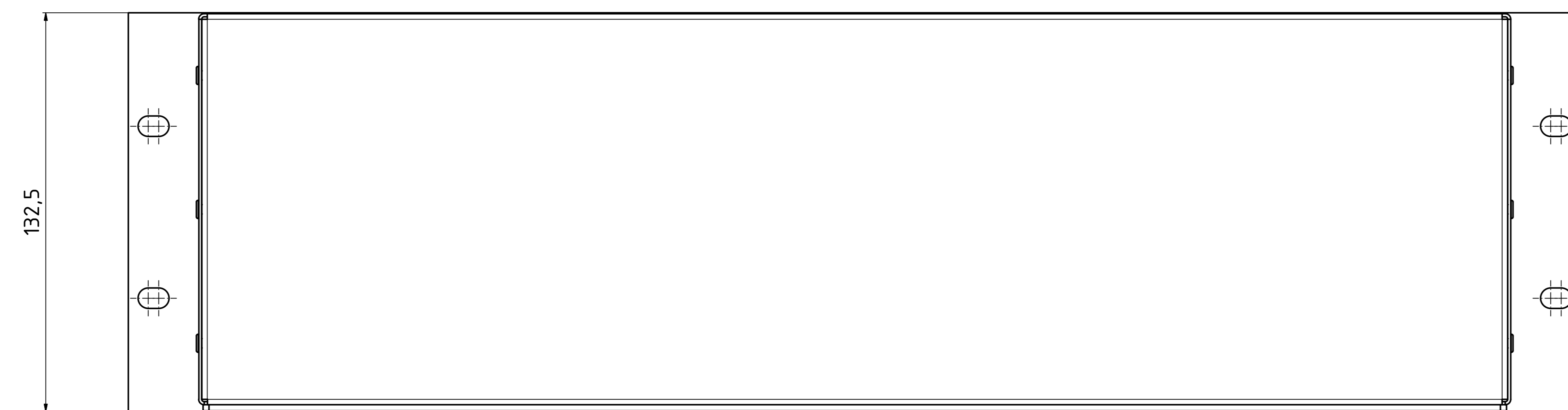
A-A (1 : 1)
Seitenansicht / Side view



ISO-Ansicht/ISO-View (1 : 2)
Ohne Deckel, Frontplatte & Schrauben /
Without lid, frontplate & screw



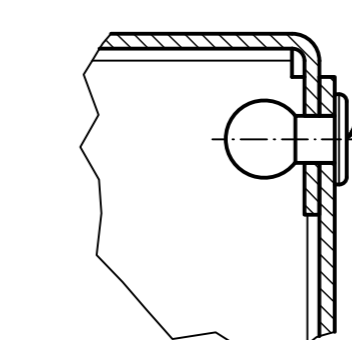
Unten / Back



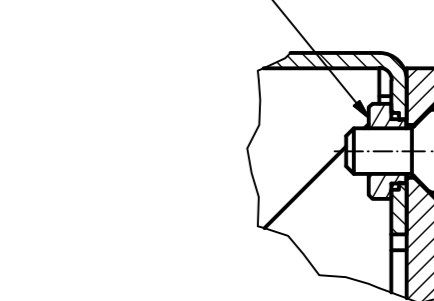
Rückansicht / Rear view

Oben / Top

Z (2 : 1)



V (2 : 1)



Stückliste / Bill of material

Pos.	St.	Modell / Model	Werkstoff / Material	Zeichnung / Drawing	Material-Nr.	Sonstiges / ect.
1	1	3HE Korpus-EMV / 3U corpus-EME 1mm	EN AW-5754-H22-ND (Alu roh/Alu raw)	0A 5425.004_0		
2	1	3HE Deckel-EMV / 3U lid-EMC 2mm	EN AW-5754-H22-ND (Alu roh/Alu raw)	2A 5425.005_0		
3	1	3HE Frontplatte-EMV / 3U frontplate-EMC 3mm	EN AW-5754-H22-ED, vorpassiviert/pre-passivated, Sichtseite nachträglich eloxiert, Schnittkanten blank / visible side anodized after machining, cutting edges raw aluminum	2A 5425.006_0		uml. 1mm kleiner wie Pos.1 / 1mm less than Pos.1
4	36	KVT CLS-M3-1	Nichtrostender Stahl 18/8 (AISI 302/303) / Stainless steel 18/8 (AISI 302/303)		59000192	19"-Abmessungen (Hx) / 19"-size (Hx)
5	12	BLINT 7337A AL/ST 3,0x6			59000191	
6	36	SHR S.M3X6, DIN.965	Edelstahl / Stainless steel		59000337	Verwendung für Pos.1 / Use for Pos.1

Artikel-Nr. /
Art.-No.:
Werkstoff-
Material:
Allg.Tol.: DIN ISO 2768-mk für Bearbeitung
Gen.Tol.: DIN ISO 2768-mk for machining
Maßstab/ Scale: 1:1 (1:2;2:1)
Zeichnungs-Nr. / Drawing-No.:
0G 5425.024.01
Ben. Erstellt nach Vorlage / Dim.: constructed by specification

Artikel / Article:
IC/Z 30380-EMV/EMC
3HE/U, 84 TE/HP, 300mm

BOPLA
A Phoenix Mecano Company

DISK: 2903701.dwg
Datum/Date: 25.08.2016 NR Blatt/Sheet: 1 / 1

geprüft/checked
Fertigungsfreigabe/Production release

"Schutzvermerk nach DIN ISO 10206 beachten" - "Please pay attention to copyright note, DIN ISO 10206"