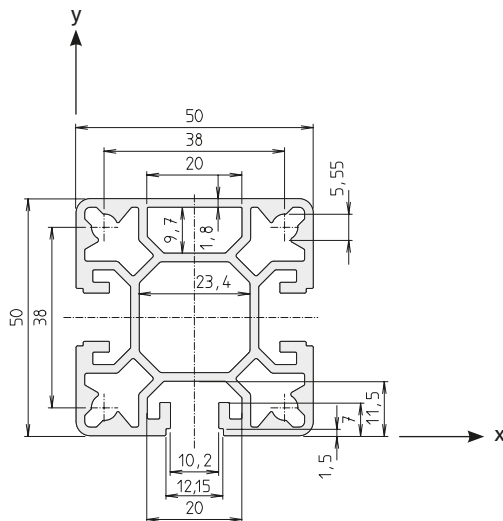


## Functional profiles

# Visible profiles / size 50

## Pillar profile SP-50x50



Area	753	mm <sup>2</sup>
$I_x$	20.8	cm <sup>4</sup>
$I_y$	20.7	cm <sup>4</sup>
$W_x$	8.2	cm <sup>3</sup>
$W_y$	8.3	cm <sup>3</sup>
Weight	2033	g/m

Code No. Pillar profile SP-50x50			Anodised
4635000	Cut to size	max. 6000 mm	Clear
4635001	Bar	6000 mm	Clear

**Note:** Purely a pillar/post profile on the face of which no connector can be attached. Profile lengths 6700 mm available on request.