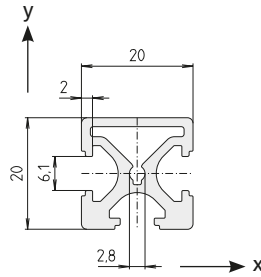




## F-G 20x20

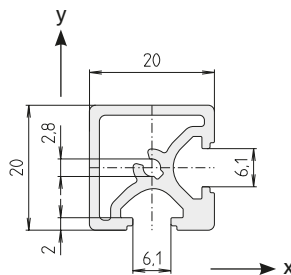


Area	182	mm <sup>2</sup>
$I_x$	0.7	cm <sup>4</sup>
$I_y$	0.8	cm <sup>4</sup>
$W_x$	0.7	cm <sup>3</sup>
$W_y$	0.8	cm <sup>3</sup>
Weight	491	g/m

Code No. Profile F-G 20x20			Anodised
<b>E07000BBA</b>	Cut to size	max. 3000 mm	Clear
<b>E07000BBC</b>	Bar	3000 mm	Clear


Connection	To slot geom.	Flange bracket kit	lot sizes	Code No.
 Long	20	F-G 20x20	10, 20, 30... pcs	<b>E01007AAE</b>
	30	Adapter	–	<b>E01009AAE</b>
	40	Adapter	–	<b>E01012AAE</b>
 Short	20	F-G 20x20	10, 20, 30... pcs	<b>E07007AAE</b>
	30	Adapter	–	<b>E07009AAE</b>
	40	Adapter	–	<b>E07012AAE</b>

## F-GG 20x20



Area	167	mm <sup>2</sup>
$I_x$	0.70	cm <sup>4</sup>
$W_x$	0.70	cm <sup>3</sup>
$W_y$	0.70	cm <sup>3</sup>
Weight	450	g/m

Code No. Profile F-GG 20x20			Anodised
<b>E08000BBA</b>	Cut to size	max. 3000 mm	Clear
<b>E08000BBC</b>	Bar	3000 mm	Clear

Connection	To slot geom.	Flange bracket kit	lot sizes	Code No.
 Short	20	F-GG 20x20	10, 20, 30... pcs	<b>E07007AAE</b>
	30	Adapter	–	<b>E07009AA</b>
	40	Adapter	–	<b>E07012AAE</b>