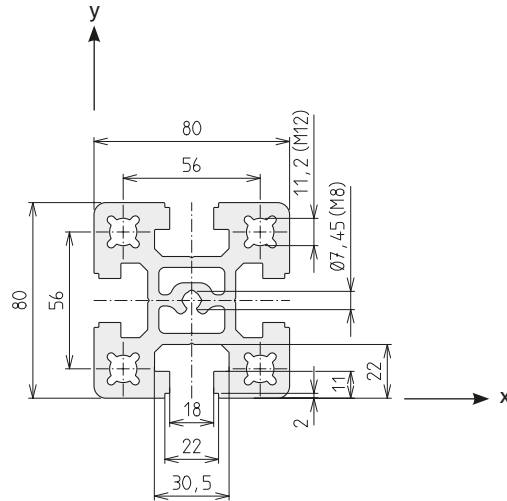


Heavy duty profiles


Heavy duty profiles / size 80

D-80x80

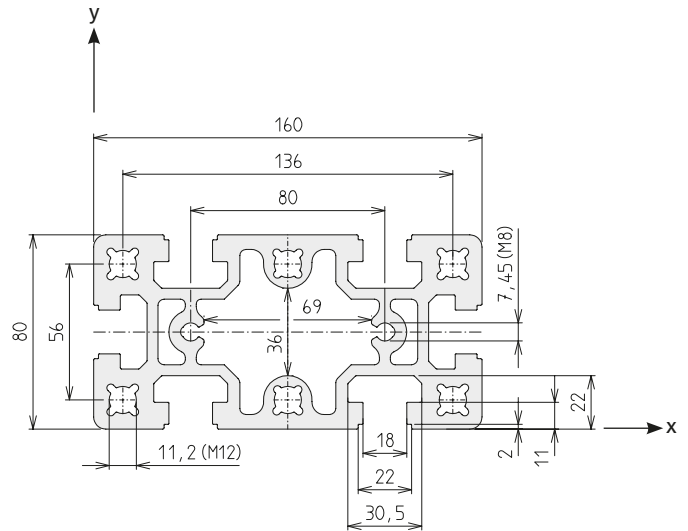
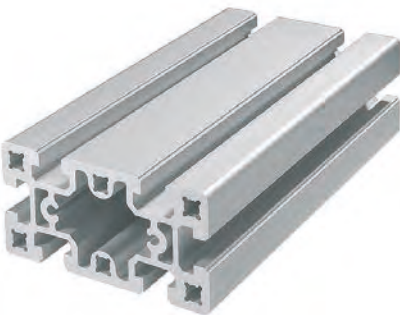


Code No. Profile D-80x80			Anodised
4C45000	Cut to size	max. 6000 mm	Clear
4C45001	Bar	6000 mm	Clear

Area	3200	mm ²
I_x	198.0	cm ⁴
I_y	199.3	cm ⁴
I_t	44.9	cm ⁴
W_x	49.6	cm ³
W_y	49.8	cm ³
Weight	8581	g/m


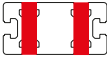
Connection	Quantity required per conn.	Slot geometry	Press mount connector	Code No. /unit
 Press mount connector long.+transverse	1	D	-N- 80	4C16701

D-80x160



Code No. Profile D-80x160			Anodised
4C15000	Cut to size	max. 6000 mm	Clear
4C15001	Bar	6000 mm	Clear

Area	5212	mm ²
I_x	367.5	cm ⁴
I_y	1397.0	cm ⁴
I_t	251.8	cm ⁴
W_x	91.6	cm ³
W_y	174.6	cm ³
Weight	14073	g/m

Connection	Quantity required per conn.	Slot geometry	Press mount connector	Code No. /unit
 long.	1	D	-N- 160	4C16700
 transverse	2		-N- 80	4C16701

Note: Holes are designed as self-tapping screw channels (M8/M12)