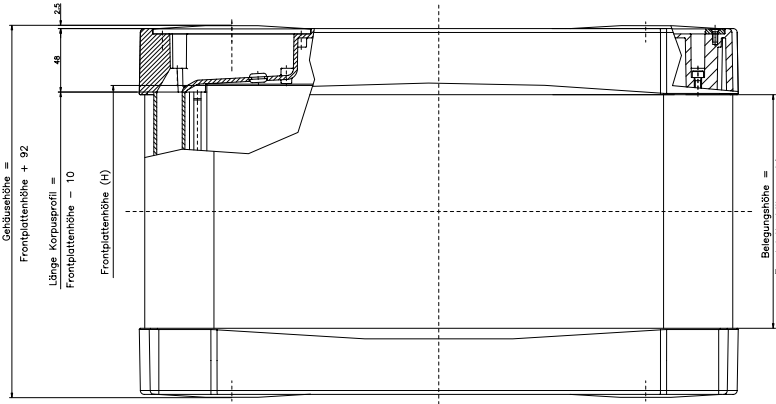
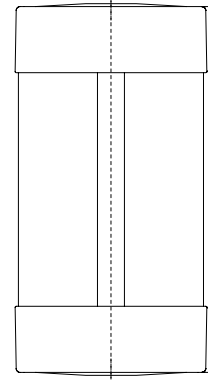


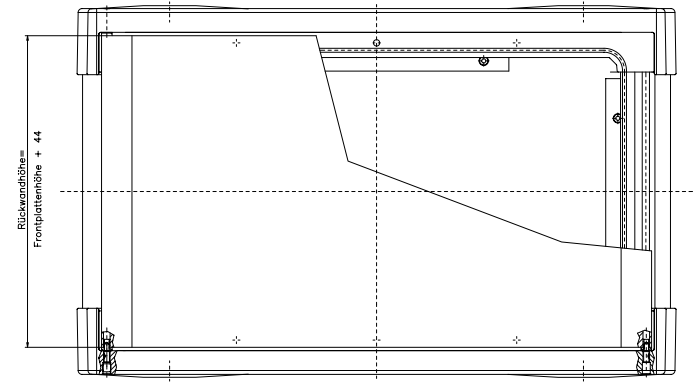
Seite A



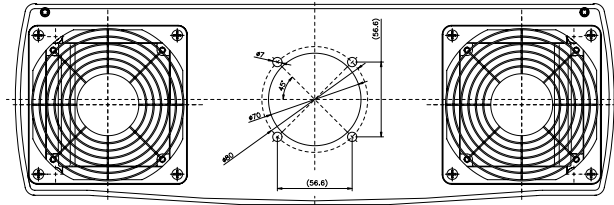
Seite D



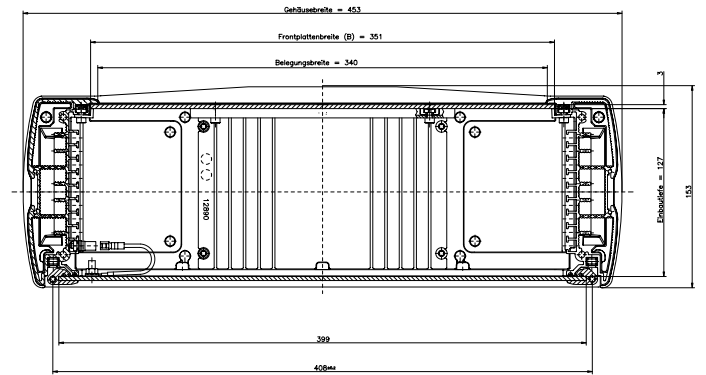
Seite B



Seite F

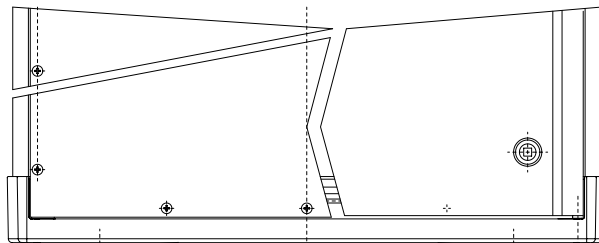


Seite E



Rückwand geschraubt

Rückwand mit Vorreiber



Profilzungen				
V.X.-Nr.	Typ	Frontplattenbreite x Höhe	Länge Korpusprofil mit Einbaulänge (L1) (mm)	
20.804210		20.804	351x350	340
20.804220		20.804	351x520	510
20.804290		20.804	Sondergröße	Frontplattenhöhe -10

ComTronic 145-GT  
Bestell-Nr.: 20.804210